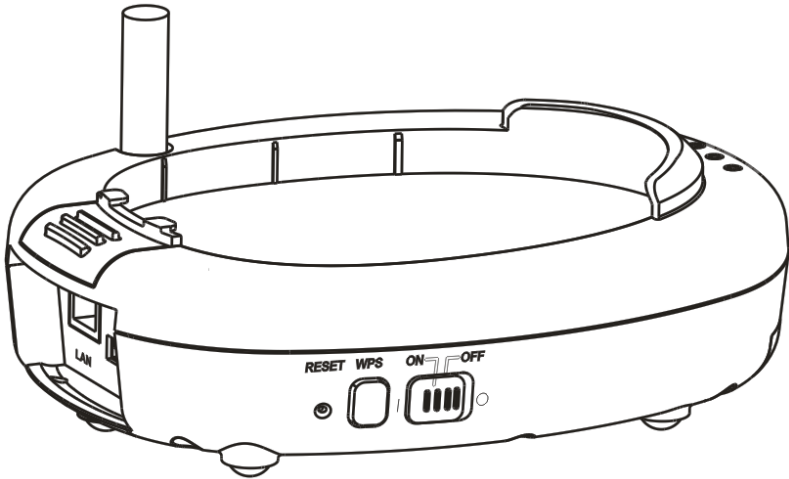


DC-A11 Wireless Flyer

User Manual



[Important]

To download the latest version of Quick Start Guide, multilingual user manual, software, or driver, etc., please visit Lumens™
<http://www.Mylumens.com/goto.htm>

Table of contents

Copyright Information	3
Chapter 1 Safety Instructions	4
Safety Precautions	5
FCC Warning.....	5
EN55022 (CE Radiation) Warning	6
SAR Warning.....	6
Revisions	7
Chapter 2 Package Contents	8
Chapter 3 Product Overview	9
3.1 DC-A11	9
3.2 Dongle	9
3.3 Settle the USB connector	10
Chapter 4 LED Light Indicators	11
Chapter 5 Installation and Connections	12
5.1 Installation flow chart.....	12
5.2 Installing application software.....	13
5.3 Installing DC120	24
5.4 Installing Dongle	25
Chapter 6 Start Using	26
6.1 Start wireless connection.....	27
6.1.1 Method 1: Auto connection.....	28
6.1.2 Method 2: Manual connection	31
6.1.3 Change the SSID.....	34
6.2 Change the setting of firewall	35
6.2.1 Windows XP	35

6.2.2 Windows 7	36
6.2.3 MAC OS X v10.6 / 10.7	37
Chapter 7 Descriptions of Major Functions	39
7.1 I would like to configure DC-A11 connection settings on the Internet.....	39
7.2 I would like to change the login password.....	39
7.3 I would like to change the SSID and channel.....	39
7.4 I would like to check the WPS connection settings	40
7.5 I would like to update the firmware.....	40
7.6 I Want to enable the encryption mode.....	41
7.7 I Want to cancel the encryption mode	51
Chapter 8 Administration Menu	52
8.1 Wireless LAN Utility.....	52
8.1.1 General.....	52
8.1.2 Profile	53
8.1.3 Available Network.....	54
8.1.4 Status.....	54
8.1.5 Statistics	55
8.1.6 Wi-Fi Protected Setup (WPS).....	55
8.2 Webpage administration.....	56
8.2.1 Wireless.....	56
8.2.2 System.....	57
Chapter 9 Troubleshooting.....	59

Copyright Information

Copyrights © Lumens Digital Optics Inc. All rights reserved.

Lumens is a trademark that is currently being registered by Lumens Digital Optics Inc.

Copying, reproducing or transmitting this file is not allowed if a license is not provided by Lumens Digital Optics Inc. unless copying this file is for the purpose of backup after purchasing this product.

In order to keep improving the product, Lumens Digital Optics Inc. hereby reserves the right to make changes to product specifications without prior notice. The information in this file is subject to change without prior notice.

To fully explain or describe how this product should be used, this manual may refer to names of other products or companies, nevertheless without any intention of infringement.

Disclaimer of warranties: Lumens Digital Optics Inc. is neither responsible for any possible technological, editorial errors or omissions, nor responsible for any incidental or related damages arising from providing this file, using, or operating this product.

Chapter 1 Safety Instructions





Always follow these safety instructions when setting up and using the Wireless Flyer:

1. Do not place Wireless Flyer in tilted position.
2. Do not place the Wireless Flyer on an unstable trolley, stand or table.
3. Do not use the Wireless Flyer near water or source of heat.
4. Use attachments only as recommended.
5. Use the type of power source indicated on the Wireless Flyer. If you are not sure of the type of power available, consult your dealer or local electricity company for advice.
6. Place the Wireless Flyer on a place that it can be unplugged easily.
7. Always take the following precautions when handling the plug. Failure to do so may result in sparks or fire.
 - Ensure the plug is free of dust before inserting it into a socket.
 - Ensure that the plug is inserted into the socket securely.
8. Do not overload wall sockets, extensions leads or multi-way plug boards as this may cause fire or electric shock.
9. Do not place the Wireless Flyer where the cord can be stepped on as this may result in fraying or damage to the lead or the plug.
10. Unplug the projector from the wall socket before cleaning. Use a damp cloth for cleaning. Do not use liquid or aerosol cleaners.
11. Do not block the slots and openings in the projector case. They provide ventilation and prevent the Wireless Flyer from overheating. Do not place the Wireless Flyer on a sofa, rug or other soft surface or in a built-in installation unless proper ventilation is provided.
12. Never push objects of any kind through cabinet slots. Never allow liquid of any kind to spill into the Wireless Flyer.
13. Except as specifically instructed in this User Manual, do not attempt to operate this product by yourself. Opening or removing covers may expose you to dangerous voltages and other hazards. Refer all servicing to licensed service personnel.
14. Unplug the Wireless Flyer during thunderstorms or if it is not going to be used for an extended period, do not place the Wireless Flyer or remote control on top of heat-emitting equipment or heated objects such as a car and etc.
15. Unplug the Wireless Flyer from the wall outlet and refer servicing to licensed service personnel when the following situations happen:
 - If the power cable or plug becomes damaged or frayed.
 - If liquid is spilled into it or the Wireless Flyer has been exposed to rain or water.

<NOTE> Do not remove the battery of Wireless Flyer. In case of any failure, please contact the original manufacturer for maintenance service.

■ Safety Precautions

Warning 1: To reduce the risk of fire or electric shock, do not expose this appliance to rain or moisture.

	<table border="1"> <tr> <td style="text-align: center;">Note</td> </tr> <tr> <td style="text-align: center;">Risk of Electric Shock</td> </tr> </table>	Note	Risk of Electric Shock	
Note				
Risk of Electric Shock				
<p>Note: To reduce the risk of electric shock. Do not remove cover (or back). No user-serviceable parts inside. Refer servicing to licensed service Personnel.</p>				
	<p>This symbol indicates that this equipment may contain dangerous voltage which could cause electric shock.</p>			
		<p>This symbol indicates that there are important operating and maintenance instructions in this User Manual with this unit.</p>		

■ FCC Warning

This equipment has been tested and found to comply with the limits for a Class B digital device, pursuant to Part 15 of FCC Rules. These limits are designed to provide reasonable protection against harmful interference in a residential installation.

This device complies with Part 15 of the FCC Rules. Operation is subject to the following two conditions:

- (1) This device may not cause harmful interference.
- (2) This device must accept any interference received, including interference that may cause undesired operation.

This transmitter must not be co-located or operating in conjunction with any other antenna or transmitter.

<p>CAUTION RISK OF EXPLOSION IF BATTERY IS REPLACED BY AN INCORRECT TYPE. DISPOSE OF USED BATTERIES ACCORDING TO THE INSTRUCTIONS.</p>

Warning 2: The wireless Docking unit (FCC ID: YVR-DC-A11) complies with FCC radiation exposure limits set forth for an uncontrolled environment. This equipment should be installed and operated with minimum distance 20 cm between the radiator & your body.

■ EN55022 (CE Radiation) Warning

This product is intended for use in a commercial, industrial, or educational environment. It is not intended for residential use.

This is a Class A product. In a domestic environment it may cause radio interference, in which case the user may be required to take adequate measures. The typical use is in a conference room, meeting room or auditorium.

■ SAR Warning

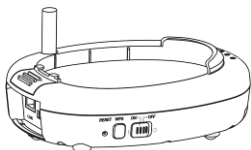
This transmitter (Dongle) must not be co-located or operating in conjunction with any other antenna or transmitter. This device complies with internationally recognized standards covering Specific Absorption Rate (SAR) related to human exposure to electromagnetic fields from radio devices.

The maximum level of Specific Absorption Rate (SAR) measured is 0.620W/kg.

Revisions

Chapter 2 Package Contents

DC-A11



Quick Start Guide

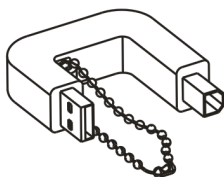


(To download this manual in other languages, visit Lumens web site)

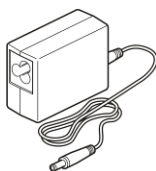
Wireless USB
Dongle for PC



USB Connection
Cable



AC Adapter



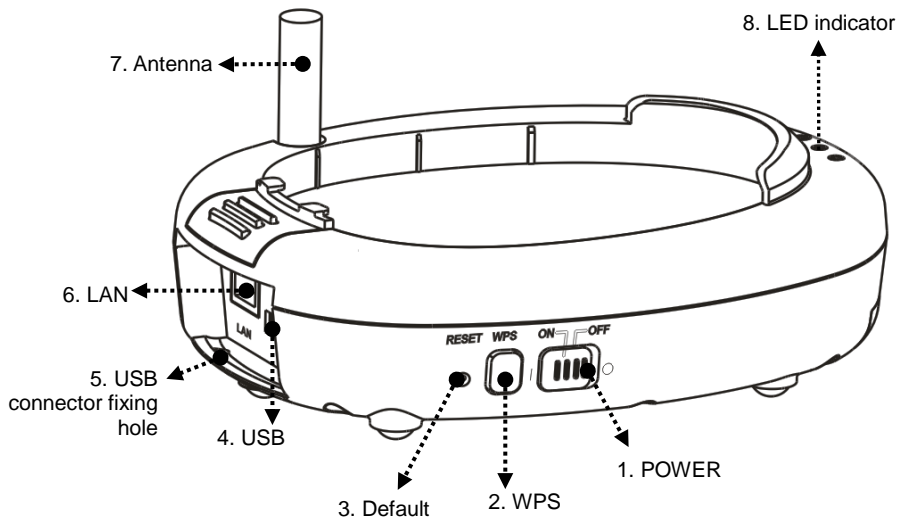
Power Cord



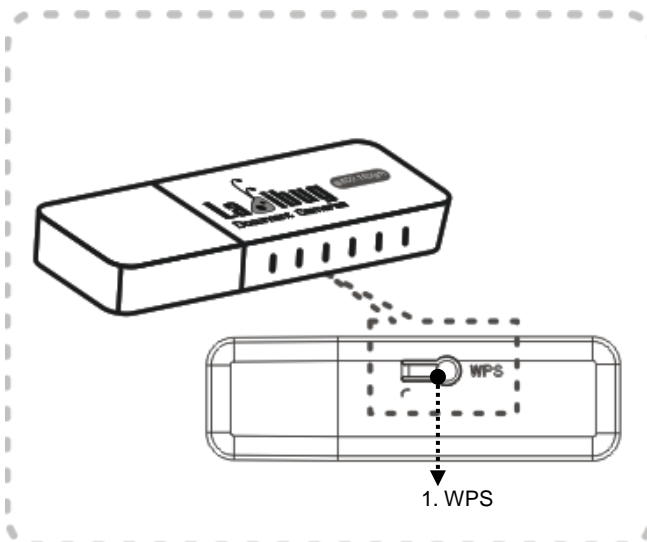
Appearance may vary depending
on country/region

Chapter 3 Product Overview

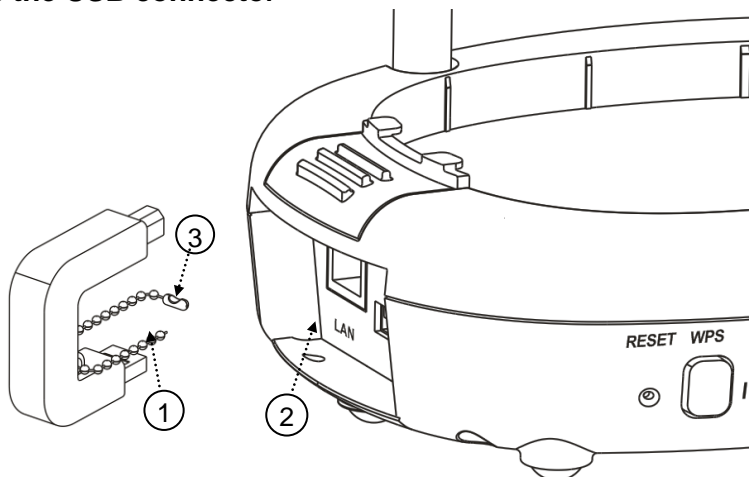
3.1 DC-A11



3.2 Dongle

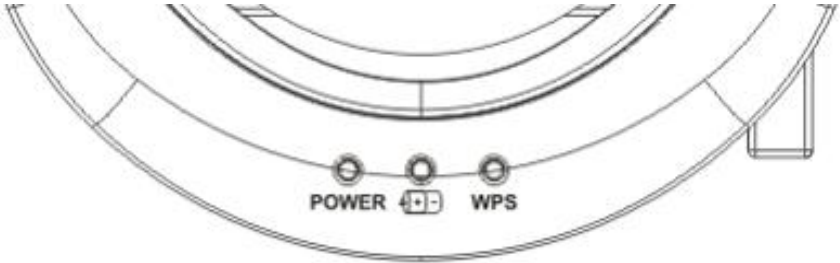


3.3 Settle the USB connector



1. Disconnect the ball chain on the USB connector holder.
2. Thread the ball chain through the connector fixing hole on DC-A11.
3. Shackle the ball chain.

Chapter 4 LED Light Indicators



4.1 POWER: The battery indicator lights blue.

4.2 Battery (+/-):

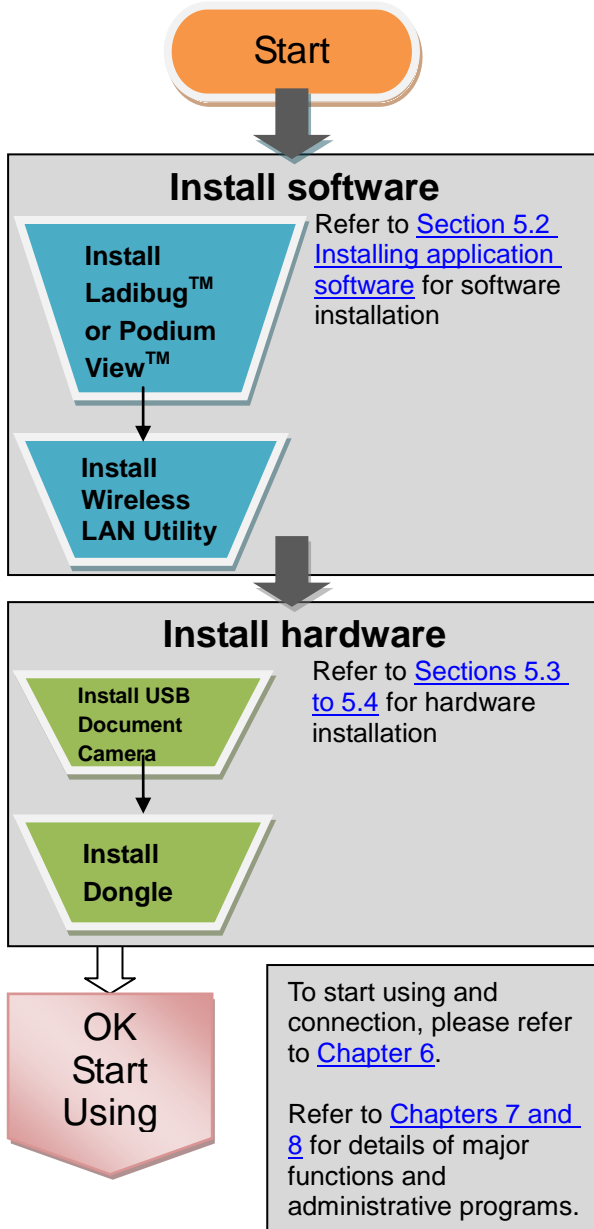
- 4.2.1 Light Off: No Power
- 4.2.2 Blue: Full Power
- 4.2.3 Red: Low power
- 4.2.4 Flashing Blue Light: In Charge

4.3 WPS:

- 4.3.1 Flashing Red Light: Detecting connection
- 4.3.2 Blue Light: Connection established

Chapter 5 Installation and Connections

5.1 Installation flow chart



5.2 Installing application software

5.2.1 System requirements

Windows XP	Windows Vista / Windows 7 / 8	MAC OS X 10.4 / 10.5 / 10.6 / 10.7 / 10.8
<ul style="list-style-type: none">● CPU: P4 2.8 GHz and above● Memory: 512MB● Support DirectX 9● Resolution: 1024x768● 100MB Free Hard-disk Space● Windows XP SP2 and above	<ul style="list-style-type: none">● CPU: P4 2.8 Ghz and above● Memory: 1GB (32-bits) / 2GB (64-bits)● DirectX 9 Compatible● Resolution: 1024x768● 100MB Free Hard-disk Space	<ul style="list-style-type: none">● CPU: PowerPC G4 866MHz or Intel Pentium® 1.83GHz Intel Core 2 Duo● Memory: 512MB● Resolution: 1024x768● 24-bit Full Color Display● 1GB Free Hard-disk Space● QuickTime 7.4.5 and above

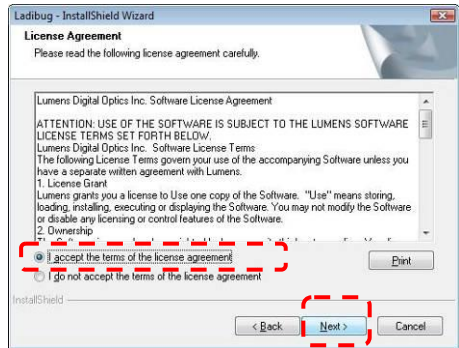
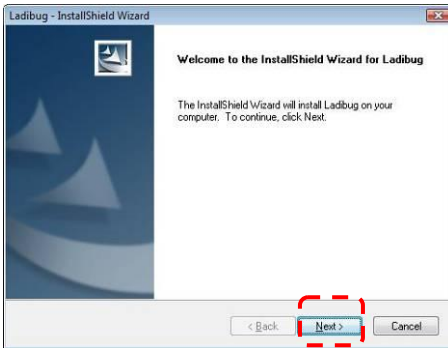
5.2.2 Installing Ladibug™ or Podium View™ — in Windows XP / Vista

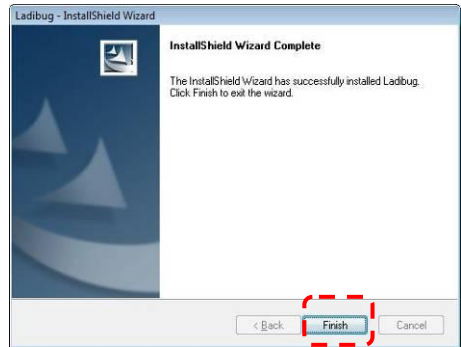
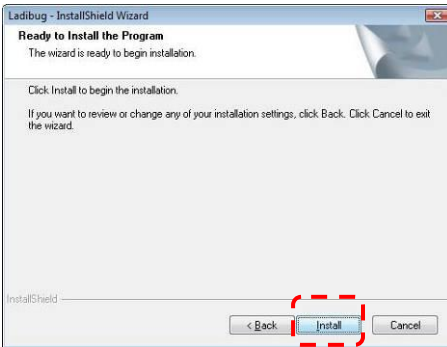
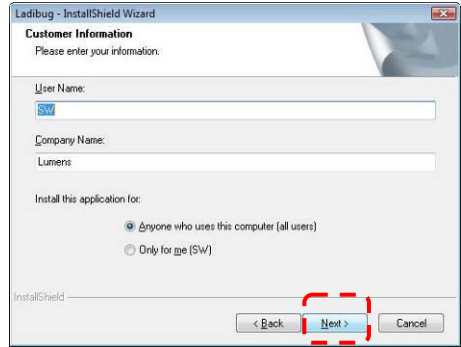
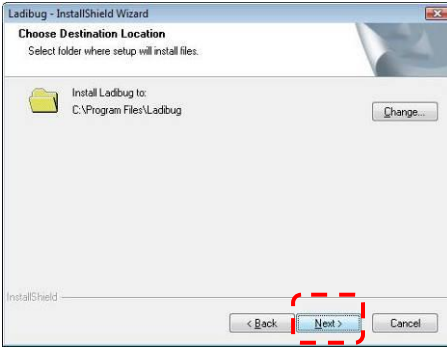
5.2.2.1 Please download the **Ladibug™** or **Podium View™** software after connected to the Lumens™ web site.

5.2.2.2 Click the EXE file after decompressing the downloaded file.

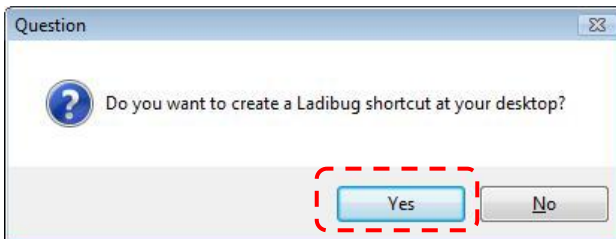
5.2.2.3 Select installation language.

5.2.2.4 Please follow the instructions, then press **[Next]**.



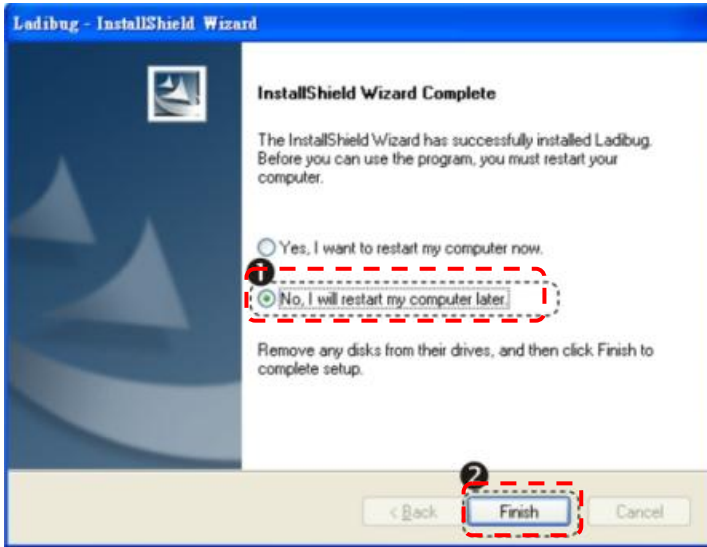


5.2.2.5 Press **[Yes]** to create a **Ladibug™** or **Podium View™** shortcut on your desktop.



5.2.2.6 Click **[NO]**, then press **[Finish]** to cancel the restart.

[NOTE: Please restart the computer only when the installation of Wireless LAN Utility is completed.]



5.2.3 Installing Ladibug™ or Podium View™ — in MAC OS

5.2.3.1 **Disable the software validation:** Select the setting of [System Preferences] in the Apple Menu.

5.2.3.2 Click **[Security]**.

5.2.3.3 Click the lock on the lower left corner to unlock the panel.

5.2.3.4 Enter the username and password of the Administrator.

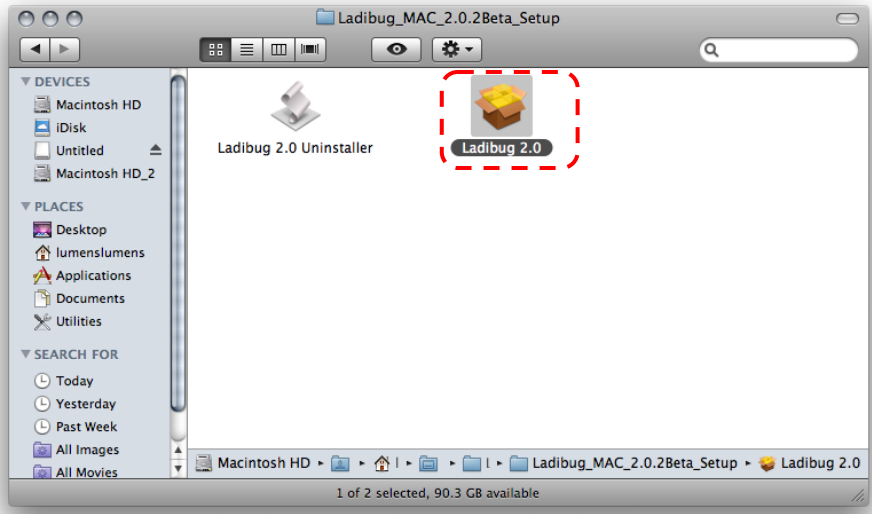
5.2.3.5 Click **[Anywhere]**.

5.2.3.6 Click **[Allow From Anywhere]**, confirm to disable the validation, and start installation.

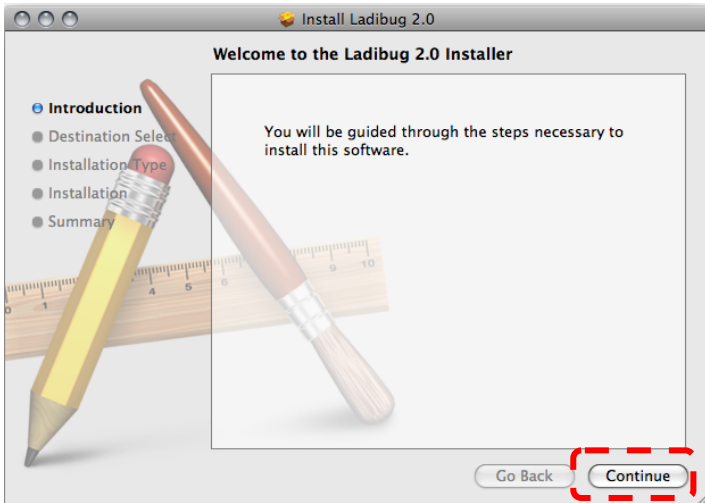
5.2.3.7 Please download the **Ladibug™ or Podium View™** software after connected to the Lumens™ web site.

5.2.3.8 Click the **[Ladibug]** or **[Podium View]** icons for installation after decompressing the downloaded file.

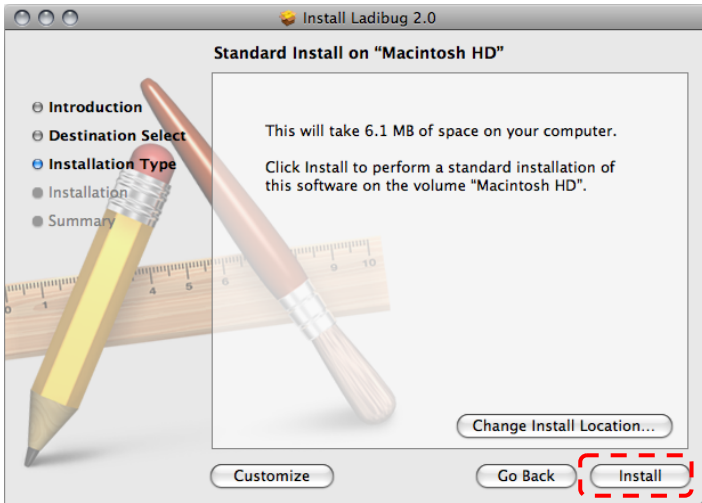
5.2.3.9 Run the installation process by following the onscreen instructions.



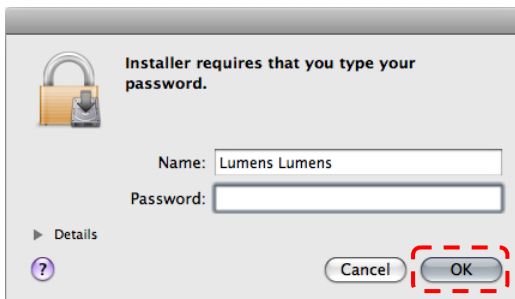
5.2.3.10 Press **[Continue]**.



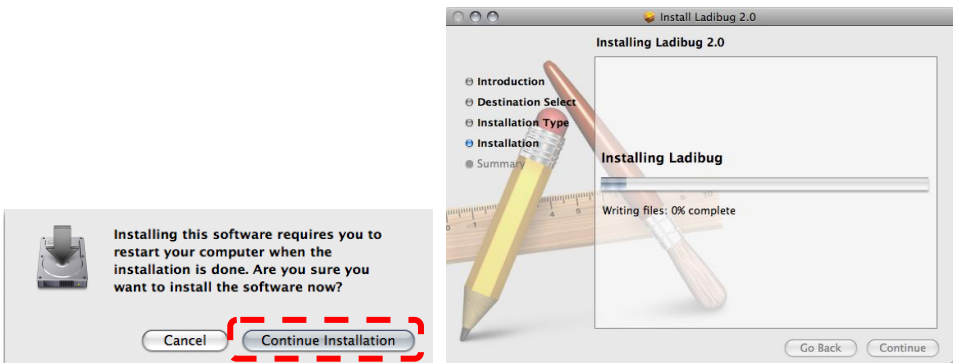
5.2.3.11 Press **[Install]**.



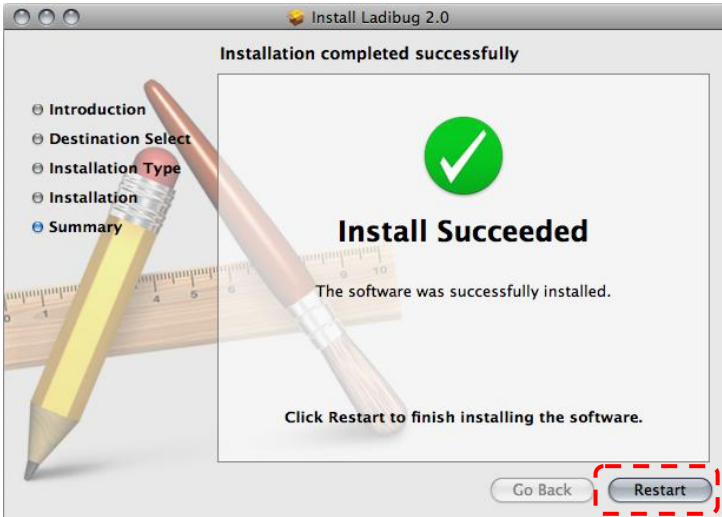
5.2.3.12 Enter your name and password, and then press **[OK]**.



5.2.3.13 Press **[Continue Installation]**.



5.2.3.14 Press **[Restart]** to finish the installation.



5.2.4 Installing Wireless LAN Utility — in Windows XP / Vista

5.2.4.1 Please download the **Wireless LAN Utility** software after connected to the Lumens™ web site.

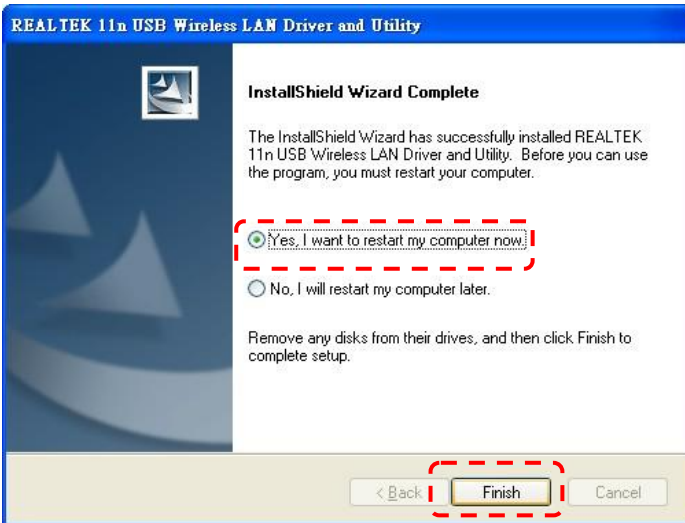
5.2.4.2 Click the EXE file after decompressing the downloaded file.

5.2.4.3 Select Language.

5.2.4.4 Please follow the instructions, then press **[Next]**.

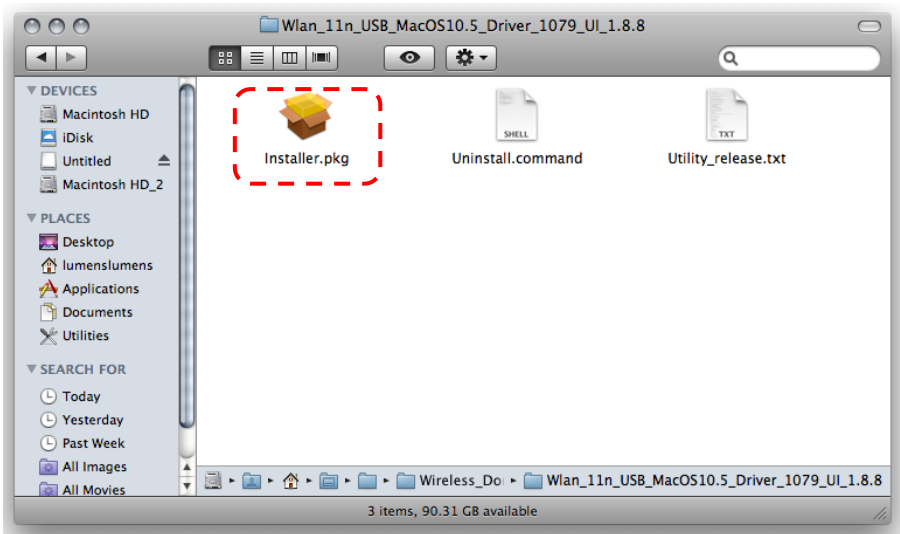


5.2.4.5 Please click the **[Finish]** button to restart your computer.



5.2.5 Installing Wireless LAN Utility — in MAC OS

- 5.2.5.1 **Disable the software validation:** Select the setting of [**System Preferences**] in the Apple Menu.
- 5.2.5.2 Click [**Security**].
- 5.2.5.3 Click the lock on the lower left corner to unlock the panel.
- 5.2.5.4 Enter the username and password of the Administrator.
- 5.2.5.5 Click [**Anywhere**].
- 5.2.5.6 Click [**Allow From Anywhere**], confirm to disable the validation, and start installation.
- 5.2.5.7 Please download the **Wireless LAN Utility** software after connected to the Lumens™ web site.
- 5.2.5.8 Press the [**Installer**] icon, open the installation wizard, and run the installation process by following the onscreen instructions after decompressing the downloaded file.



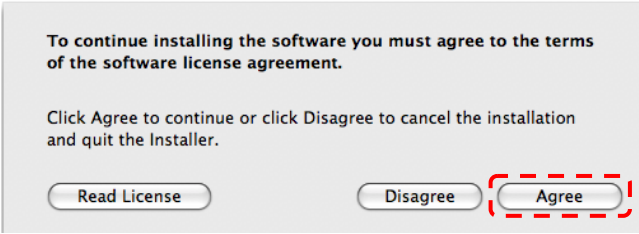
5.2.5.9 Press **[Continue]**.



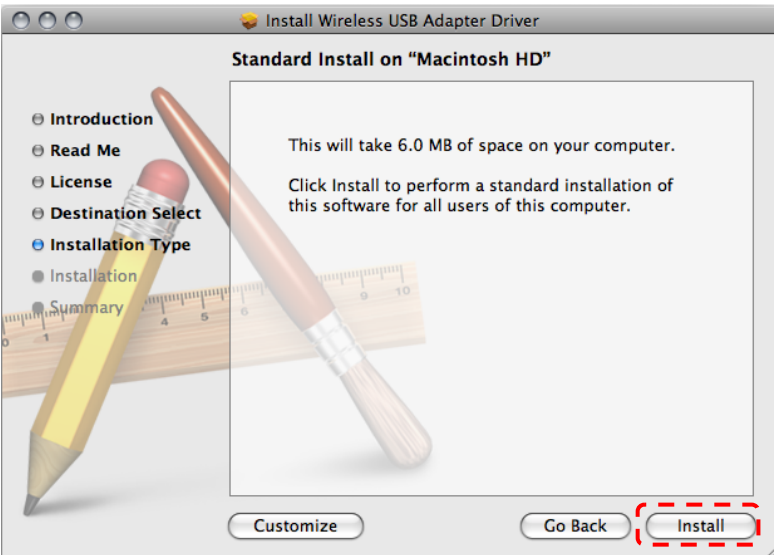
5.2.5.10 Select the language, and press **[Continue]**.



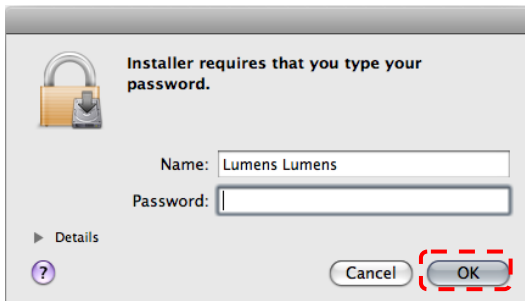
5.2.5.11 Press **[Agree]**.



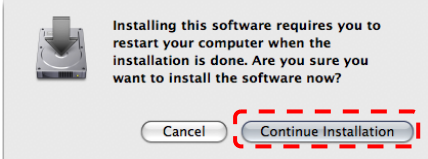
5.2.5.12 Press **[Install]**.



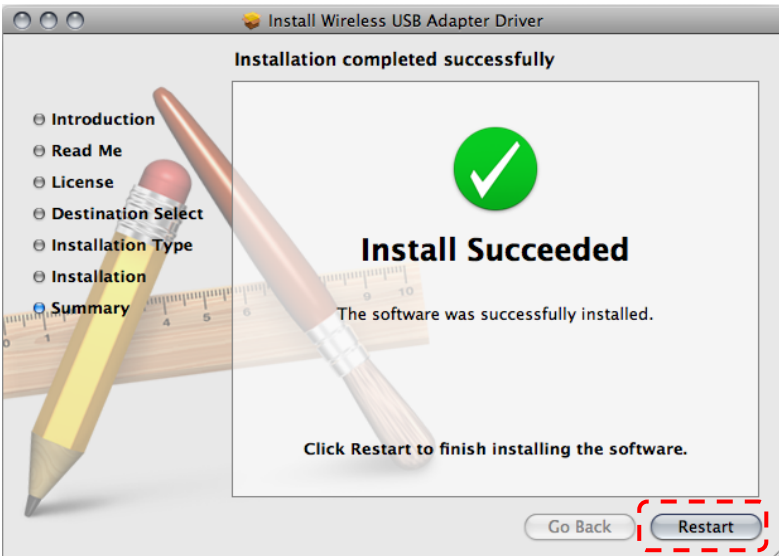
5.2.5.13 Enter your name and password, and then press **[OK]**.



5.2.5.14 Press [Continue Installation].

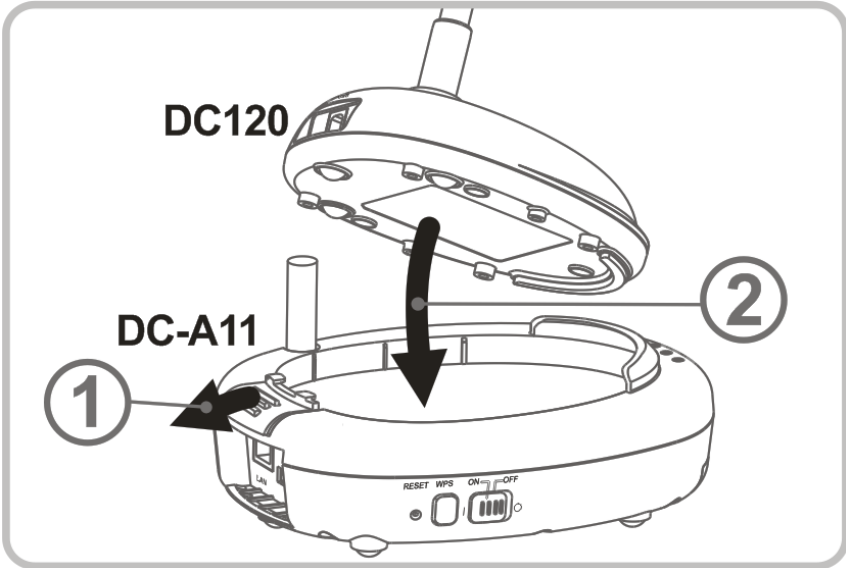


5.2.5.15 Press [Restart] to finish the installation.

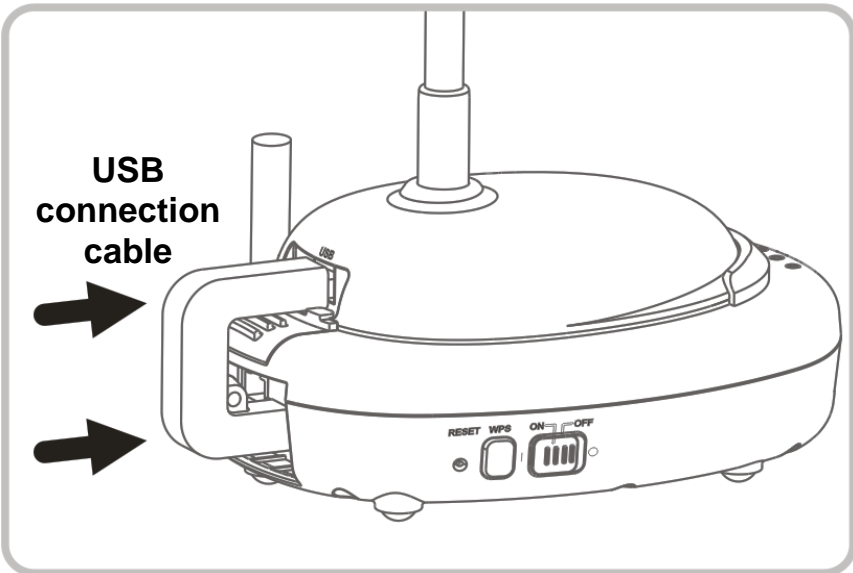


5.3 Installing DC120

5.3.1 Installing DC120 on DC-A11

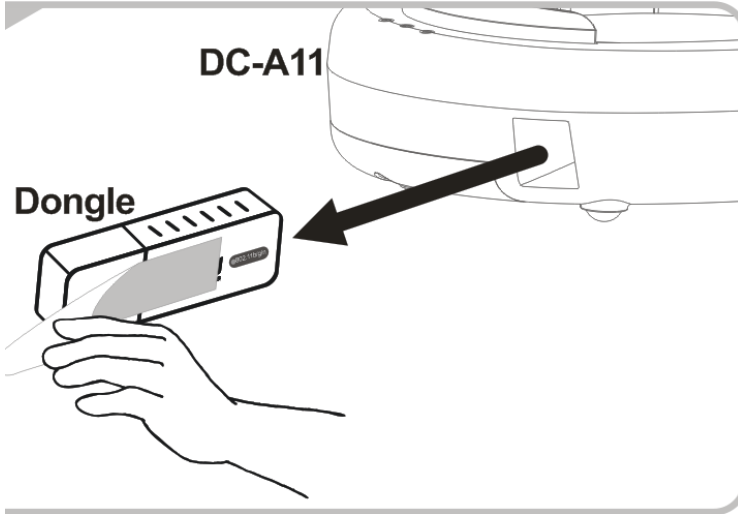


5.3.2 Installing USB connection cable on DC120 and DC-A11.



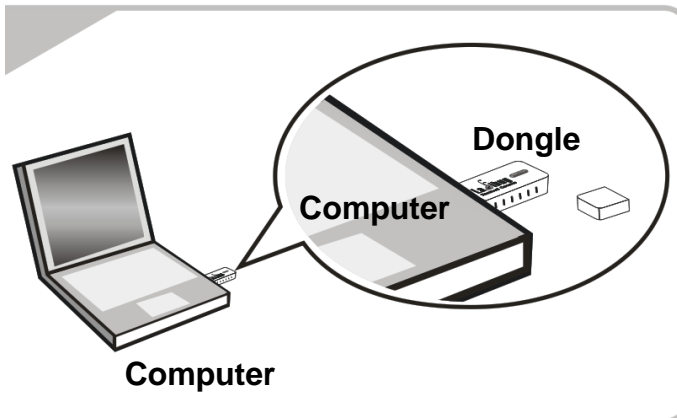
5.4 Installing Dongle

5.4.1 Pull out the Dongle and remove the protective film

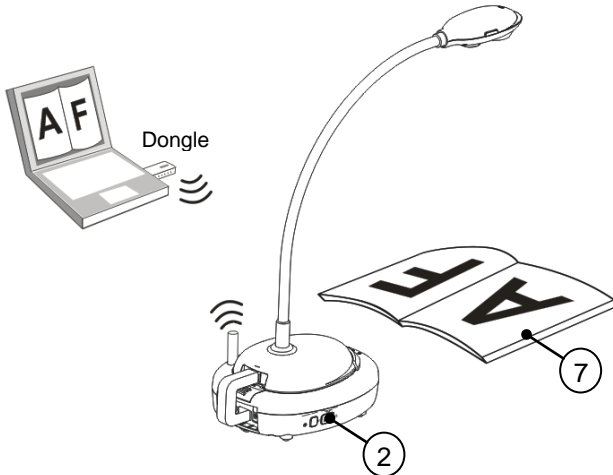


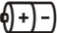




5.4.2 Installing the Dongle into the USB port on a computer

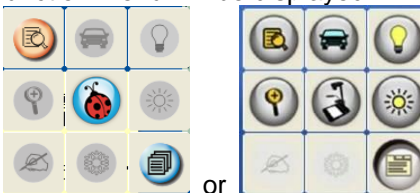
<NOTE> If the preview of Ladibug™ or Podium View™ is opened, do not unplug the Dongle directly from the computer. You should unplug the Dongle after the Ladibug™ or Podium View™ is closed.




Chapter 6 Start Using



1. Charge the unit for 3 hours before the first use.
2. Switch the Power to [ON] .(Note: When the unit is fully charged, ) indicator lights blue.
3. To start connection, please follow the steps of [Section 6.1.1 Auto connection](#).
4. Modify SSID before the first use. Please follow the steps of [6.1.3 Change the SSID](#) for modification.
5. Double click on [Ladibug]  or [Podium View]  icon to activate Ladibug™ or **Podium View**™ software.
6. Move the cursor to [Ladibug]  or [Podium View]  icon, and the main function menu will be displayed.



7. Place an object to be displayed under the camera.
8. Press  to display a live image. Please make the following settings before the first use.
 - 8.1. **Windows security alert:** Please press [Unblock].
 - 8.2. Set the **POWER Frequency** according to the on-screen instructions.

A live image is displayed when the setting is finished.

Note: You are advised to confirm the local voltage/frequency before setting the POWER Frequency. For example, 60Hz is applicable for America, Taiwan, Japan, etc; 50Hz is applicable for Europe or other regions.

9. Click [AUTO TUNE]  button to optimize the image.









<Remark> For more information on the operation of Document Camera, please refer to [Document Camera User Manual](#).




6.1 Start wireless connection

[Note] How to improve the quality of wireless signals?

The frequency range of IEEE 802.11 b/g/n is 2.4 or 5 GHz, and the signals will be interfered when similar frequencies are used, including co-channel interference and adjacent-channel interference. To avoid such interference, the power supply of wireless apparatuses such as wireless telephone, Bluetooth equipment, microwave, etc. that are near to your Wireless Flyer should be switched off and be moved far away. Or, alternatively, set them 2 channels or more away from the channel of your Wireless Flyer. Please refer to [7.3 I would like to change the SSID and channel](#) for related setting information.

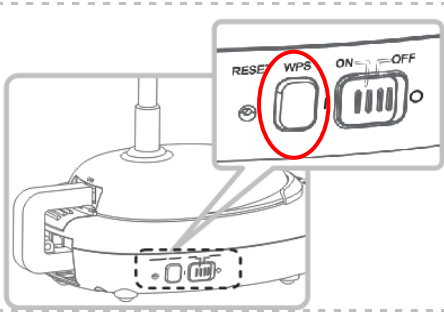
The wall material of the room, furnishings and even the switches for the doors would affect the wireless signals. The best location for wireless AP is in the space without obstacles, which would ensure the best signal coverage. Please refer to the following table for the influence degree of signal strength.

Environment Material	Possible Influence Degree	Example
Air		
Wood		Compartment
Plaster		Interior Wall
Asbestos		Ceiling
General Glass		Window
Water		The aquarium
Brick		General interior and Exterior wall
Marble		Floor

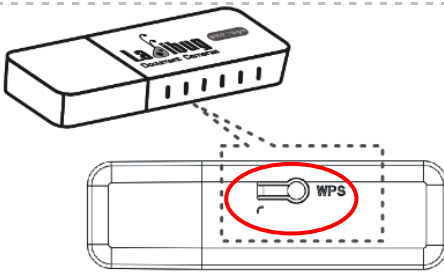
Cement/Concrete		Floor and exterior wall
Metal		Steel cabinet and compartment
The more  means the higher degree of influence.		

6.1.1 Method 1: Auto connection

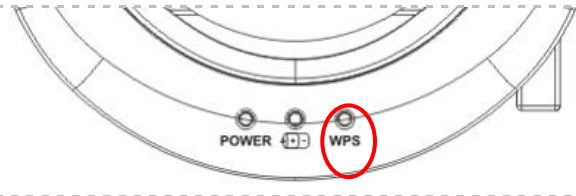
- a. Press the WPS button of DC-A11.



- b. Within 30 seconds, press and hold the WPS button of Dongle for about 5 seconds.



▼ <Note> The WPS indicator of DC-A11 will now flash red, and then light blue after the connection is made. The WPS connection of a second DC-A11 at the same time may cause disturbance and lead to connection failure.



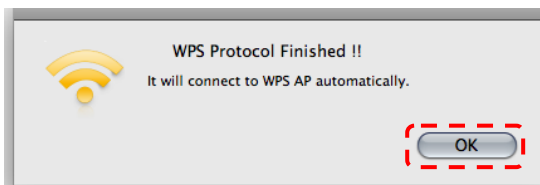
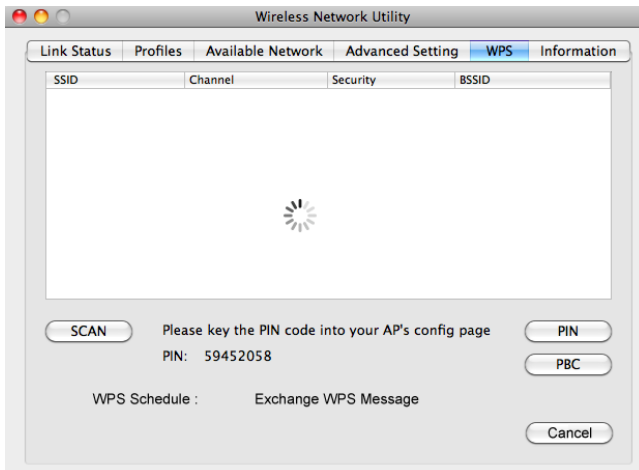
- c. Connection
 ➤ For **Windows**

The connection will start when the following window pops up. The connection will complete when the window closes.



➤ For **MAC**

The connection will start when the following window pops up. Press **[OK]** to finish the connection.

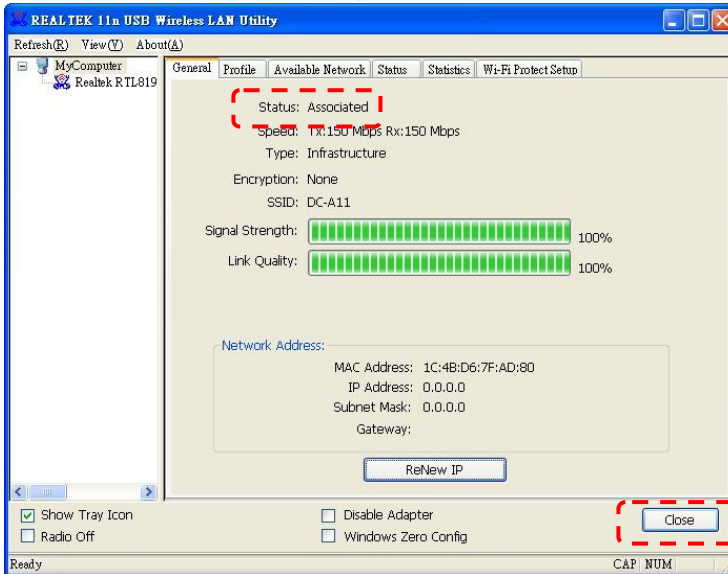


d. Connection succeeded.

➤ For **Windows**

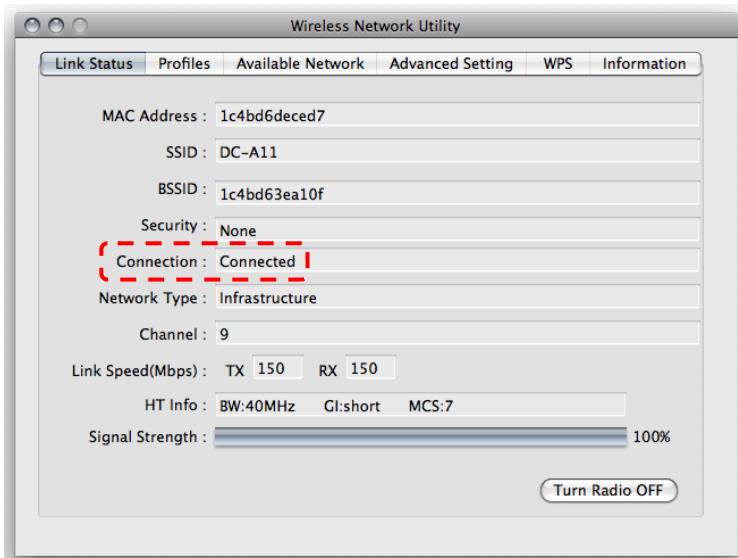


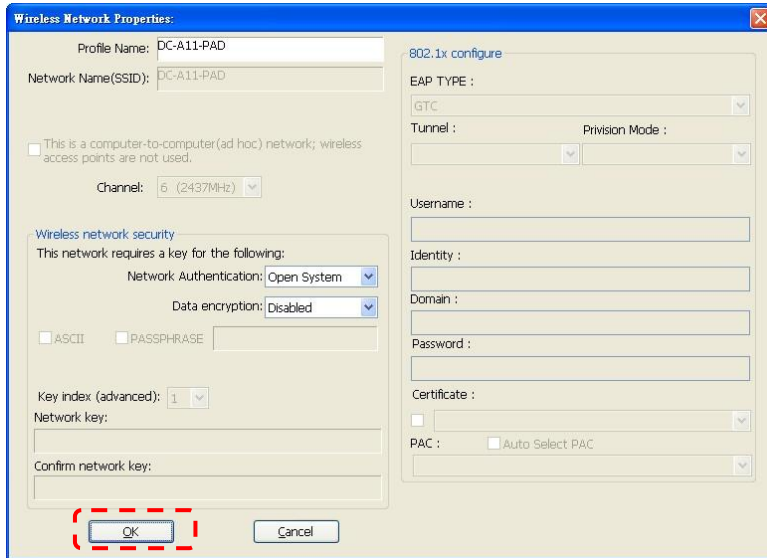
Double click the icon of Wireless LAN Utility.



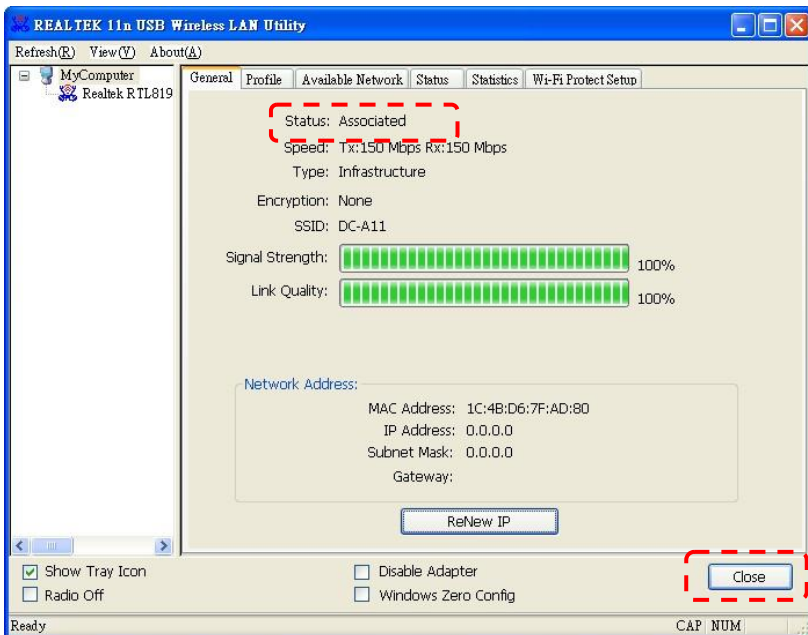
➤ For **MAC**

The following window pops up when the connection is finished.



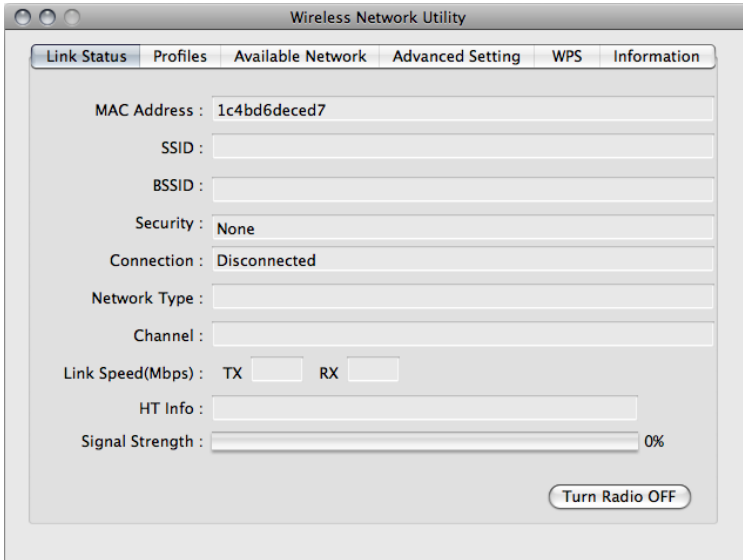


- e. The connection is activated if the status is **[Associated]**. Please click **[Close]** to exit.

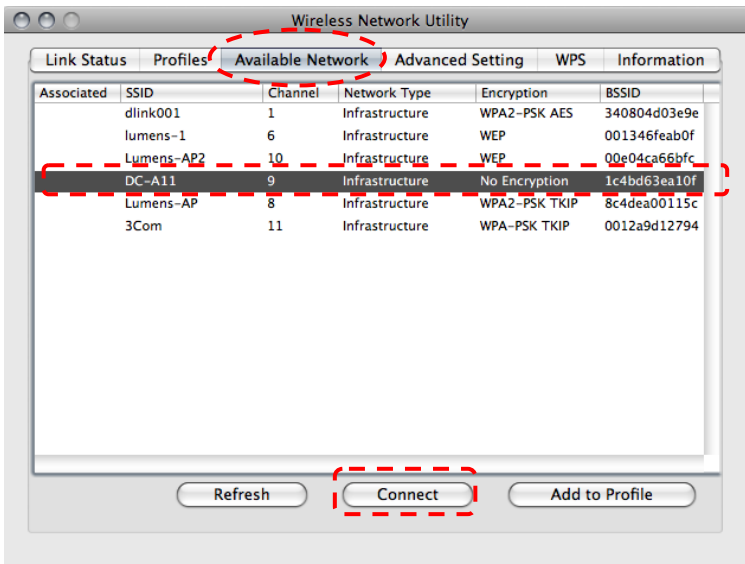


➤ For **MAC**

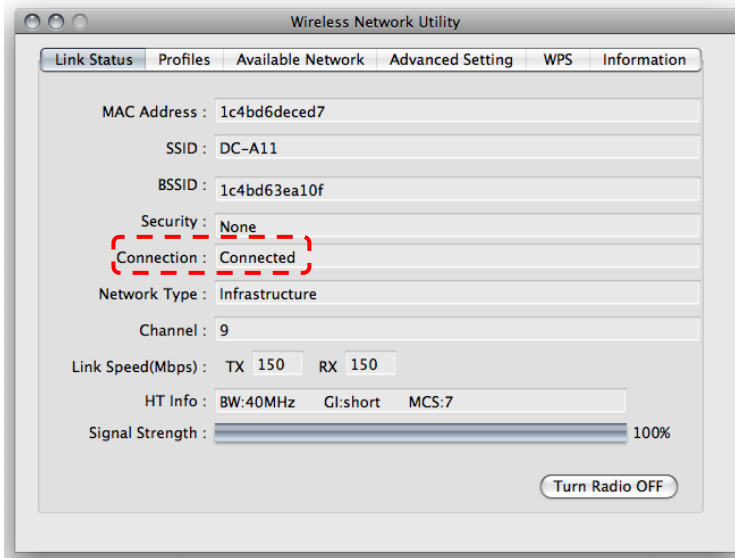
a. Insert Dongle, and the following window will pop up.



b. Select [**Available Network**] tab and click [**DC-A11**] (Default). Then, press [**Connect**] to start connection.



c. Connection succeeded.



6.1.3 Change the SSID

6.1.3.1 Open the Internet Explorer webpage browser, and enter [192.168.2.1] (default) in the address bar.

6.1.3.2 Enter the Login Name [**Admin**].

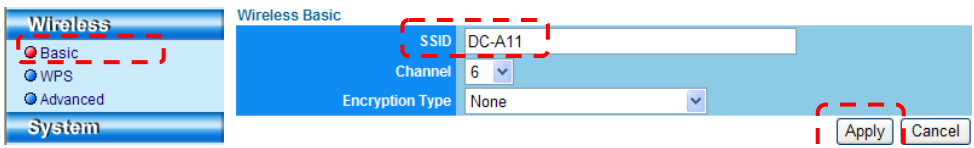
6.1.3.3 Enter the Password (**Admin**) by default, and click the [Login] button.

6.1.3.4 Enter the [**Basic**] page.

6.1.3.5 Enter new [**SSID**], and click [**Apply**] to apply the changes.

[Note] Please use English letters and numbers in SSID name.

6.1.3.6 Follow the steps of [6.1.1 Auto connection](#) for reconnection.



6.2 Change the setting of firewall

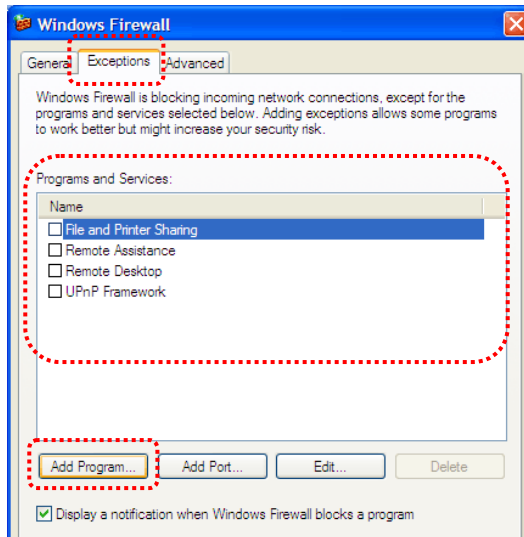
6.2.1 Windows XP

6.2.1.1 Select **[Console]** in **[Start]** menu.

6.2.1.2 Click **[Information Security Center]**, and then click **[Windows Firewall]**.

[Remark] Click **[Windows Firewall]** in the traditional view of **[Console]**.

6.2.1.3 In **[Windows Firewall Setting]** window, click the tab **[Exceptions]**.



6.2.1.4 Be sure to select ***Ladibug/Podium View*** under **[Programs and Services]**, and then click **[OK]**.

6.2.1.5 If ***Ladibug/Podium View*** was not listed under **[Programs and Services]**, click **[Add Program]**.

6.2.1.6 Select the ***Ladibug/Podium View*** program, then click **[OK]**. If it was not listed, please click **[Browse]**, select ***Ladibug/Podium View*** program, and then click **[Enable]**.

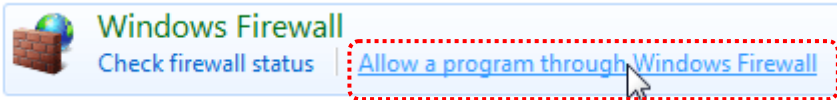
[Remark] ***Ladibug/Podium View*** may be displayed in the form of ***Ladibug.exe/Podium View.exe***.

6.2.1.7 Exit **[Windows Firewall Setting]**, and start to use the software.

6.2.2 Windows 7

6.2.2.1 Select **[Console]** in **[Start]** menu.

6.2.2.2 Click **[System and Security]**, and then click **[Allow a program through Windows Firewall]**.



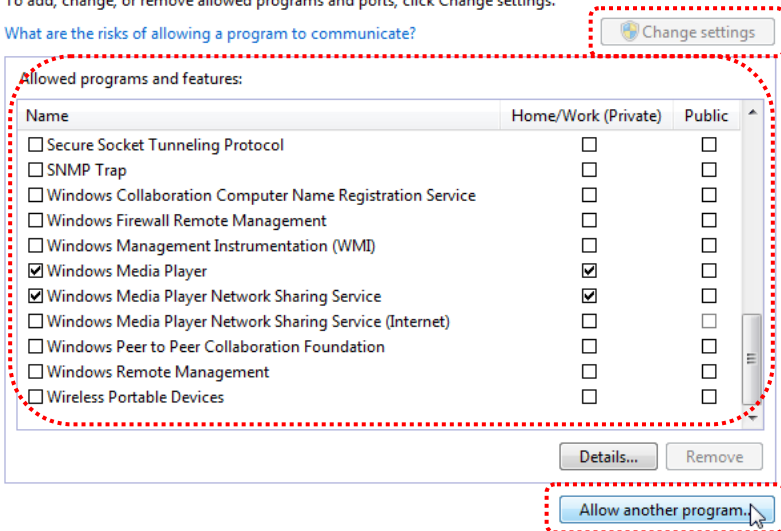
[Remark] Click **[Windows Firewall]** in the icon view of **[Console]**.

6.2.2.3 Select **[Change settings]** in **[Allowed programs and features]** window.

Allow programs to communicate through Windows Firewall

To add, change, or remove allowed programs and ports, click Change settings.

What are the risks of allowing a program to communicate?



6.2.2.4 Please select ***Ladibug/Podium View*** program in the list.

6.2.2.5 If ***Ladibug/Podium View*** was not listed, please click **[Allow another program]**, and then you will find ***Ladibug/Podium View*** program.

6.2.2.6 Select **Ladibug/Podium View**, and then click **[Add]**. If it was not listed, please click **[Browse]**, select **Ladibug/Podium View** program, and then click **[Enable]**.

[Remark] Ladibug/Podium View may be displayed in the form of **Ladibug.exe/Podium View.exe**.

6.2.2.7 Click **[OK]** in **[Allowed Program]** window.

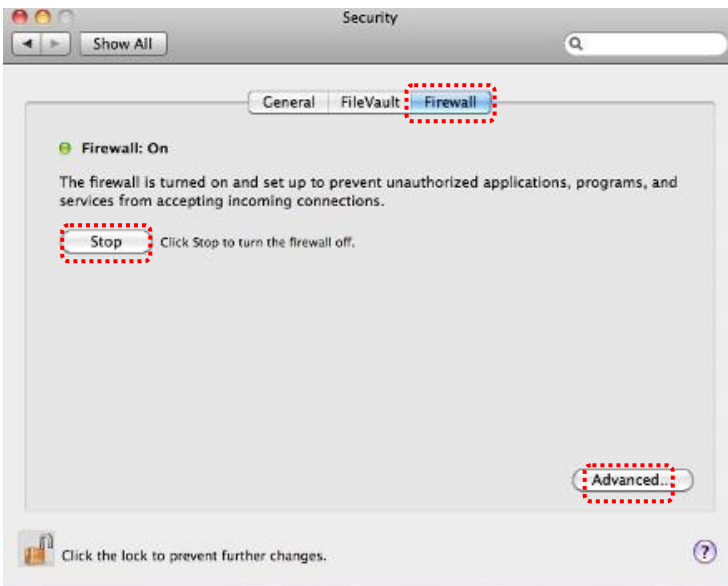
6.2.2.8 Close **[Windows Firewall Setting]** window.

6.2.3 MAC OS X v10.6 / 10.7 / 10.8

6.2.3.1 Select the setting of **[System Preferences]** in the Apple Menu.

6.2.3.2 Click **[Security]**.

6.2.3.3 Click the tab **[Firewall]**.



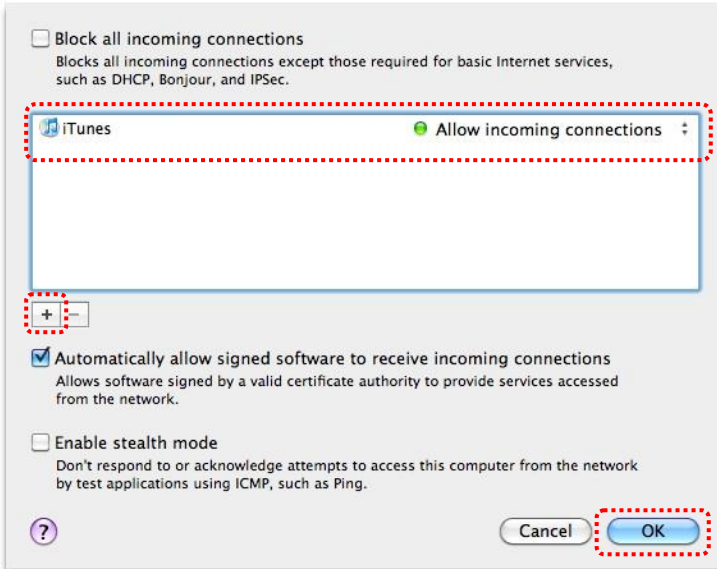
6.2.3.4 Click the lock on the lower left corner to unlock the panel, and enter the username and password of the Administrator.

6.2.3.5 Click **[Start]** to enable the firewall.

6.2.3.6 Click **[Advanced]** at the lower right corner.

6.2.3.7 Select **[Automatically allow signed software to receive incoming connections]**.

6.2.3.8 Change ***Ladibug/Podium View*** in the list to **[Allow incoming connections]**. If the software name was not listed, please click **[+]** to add new programs to the list, and start to use the software.



Chapter 7 Descriptions of Major Functions

<NOTE 1> Close the Ladibug™ or Podium View™ before you modify any settings.

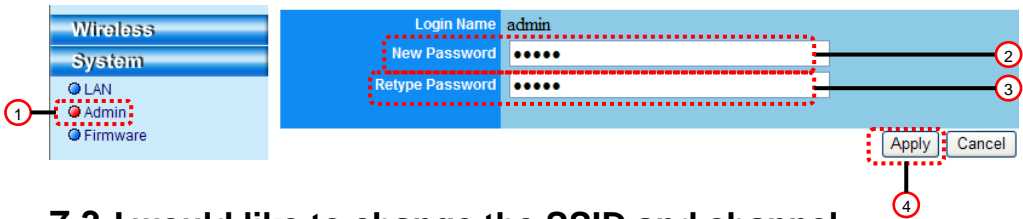
[Note 2] After setting, please turn off the DC-A11 power supply and restart to apply the settings

7.1 I would like to configure DC-A11 connection settings on the Internet

- 7.1.1 Open the Internet Explorer webpage browser, and enter [192.168.2.1] (default) in the address bar.
- 7.1.2 Enter the Login Name [Admin]. (**Please pay attention to capitalization.**)
- 7.1.3 Enter the Password ([Admin] by default), and click the [Login] button.

7.2 I would like to change the login password

- 7.2.1 Click the [Admin] button to enter the [Admin] page.
- 7.2.2 Enter the new password in the [New Password] field.
- 7.2.3 Re-enter the password in the [Retype Password] field for verification.
- 7.2.4 The webpage will be offline after you press [Apply] to apply the changes.
- 7.2.5 Please log in the webpage again.

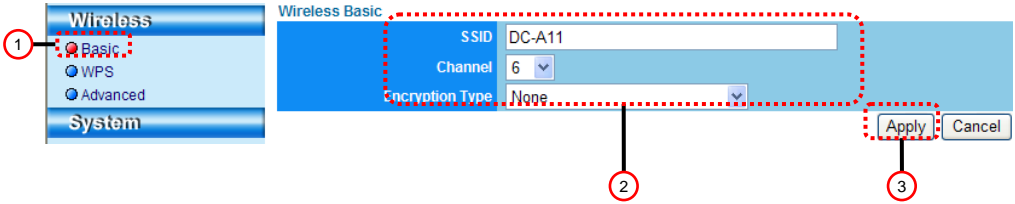


7.3 I would like to change the SSID and channel

- 7.3.1 Click the [Basic] button to enter the [Basic] page.
 - ※ [SSID]: (the public name of a wireless network): Set and change the name of the wireless network to be displayed.
 - ※ [Channel]: The channel is [Channel 06] by default. Please choose your own channel frequency.
 - ※ [Encryption Type]: Choose your encryption type. (Please refer to [7.6 I Want to Enable the Encryption Mode](#))

7.3.2 Press [Apply] to apply the changes, and the webpage will be offline.

7.3.3 Follow the steps of [6.1.1 Auto connection](#) on Page 19 for reconnection.



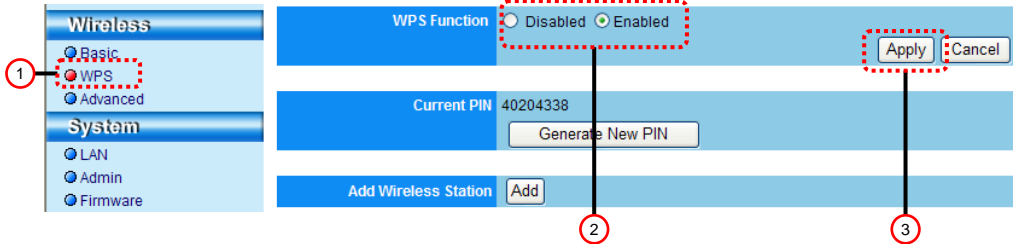
7.4 I would like to check the WPS connection settings

7.4.1 Click the [WPS] button to enter the [WPS] page.

7.4.2 The default is [Enabled]. To cancel WPS function, please click [Disable].

7.4.3 Click [Apply].

[Note] Auto connection is available for WPS function.



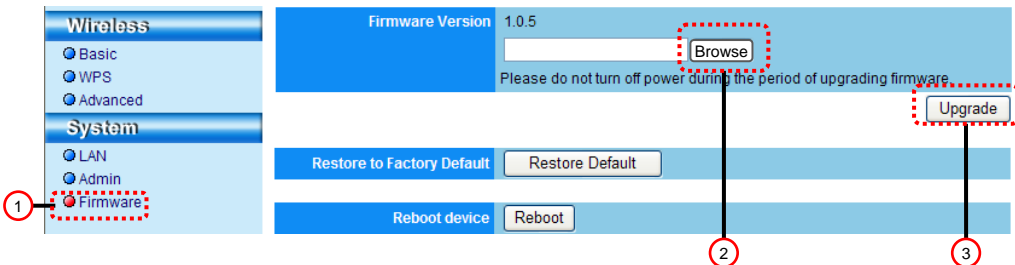
7.5 I would like to update the firmware

7.5.1 Please visit Lumens™ web site: <http://www.Mylumens.com/goto.htm> to download the updated firmware file.

7.5.2 Click the [Firmware] button to enter the [Firmware] page.

7.5.3 Click [Browse] to load the update file that you've just downloaded.

7.5.4 Click [Upgrade].

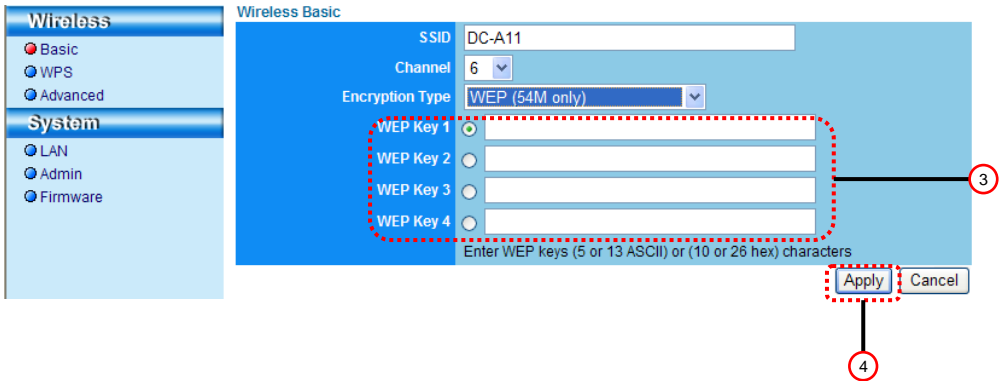
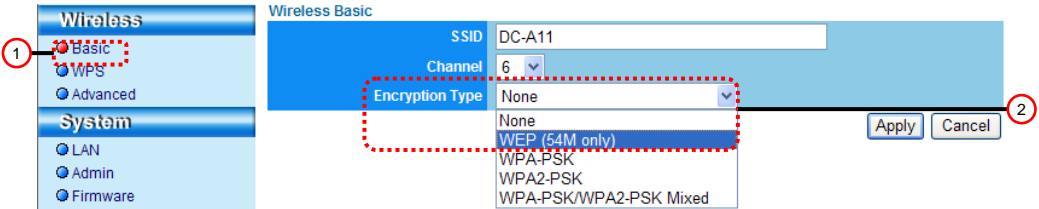


7.6 I Want to enable the encryption mode

7.6.1 Set up encryption

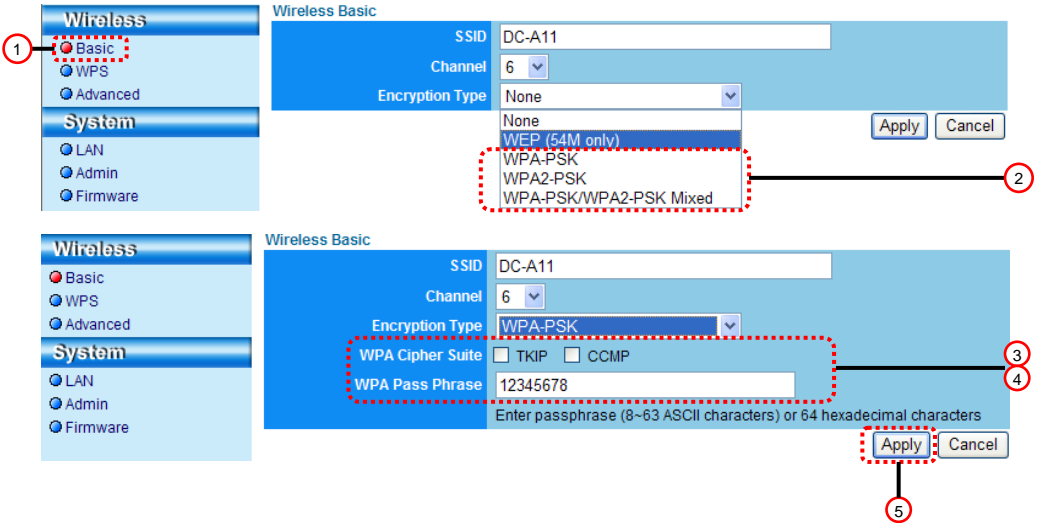
7.6.1.1 Use WEP encryption

1. Enter [Basic] Page.
 2. [Encryption Type]: Select an encryption mode. It is recommended that you set up your password with [WEP] Type.
 3. WEP Key 1~4: Select one and enter a passphrase.
 1. To use **ASCII**: Enter 5 or 13 characters (0-9 and A-Z only).
 2. To use **HEX**: Enter 10 or 26 characters (0-9 and A-F only).
- <NOTE> Only one set of columns can be used at a time.**
4. Press [Apply] to apply your changes.



7.6.1.2 Use WPA-PSK, WPA2-PSK, WPA-PSK/WPA2-PSK Mixed encryption


1. Enter the [Basic] page
2. [Encryption Type]: Select an encryption type [**WPA-PSK/WPA2-PSK**]
3. [WPA Cipher Suite]: Select a format [**TKIP/CCMP**]
4. [WPA Passphrase]: Set up a password
 1. To use **ASCII**: Enter 8 to 63 characters (0-9 and A-Z only)
 2. To use **HEX**: Enter 64 characters (0-9 and A-F only)
5. Press [Apply] to apply your changes.

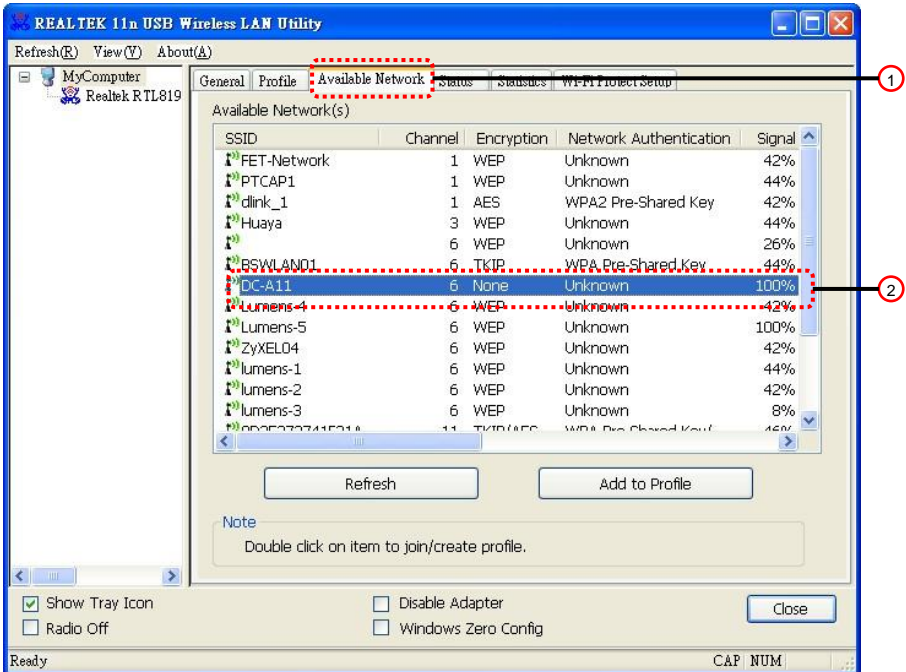


7.6.2 Enable encrypted connections

7.6.2.1 WEP encryption

➤ For Windows

1. Double click the Wireless LAN Utility  icon.
2. Select **[Available Network]** tab and click **[DC-A11]** (Default SSID name).

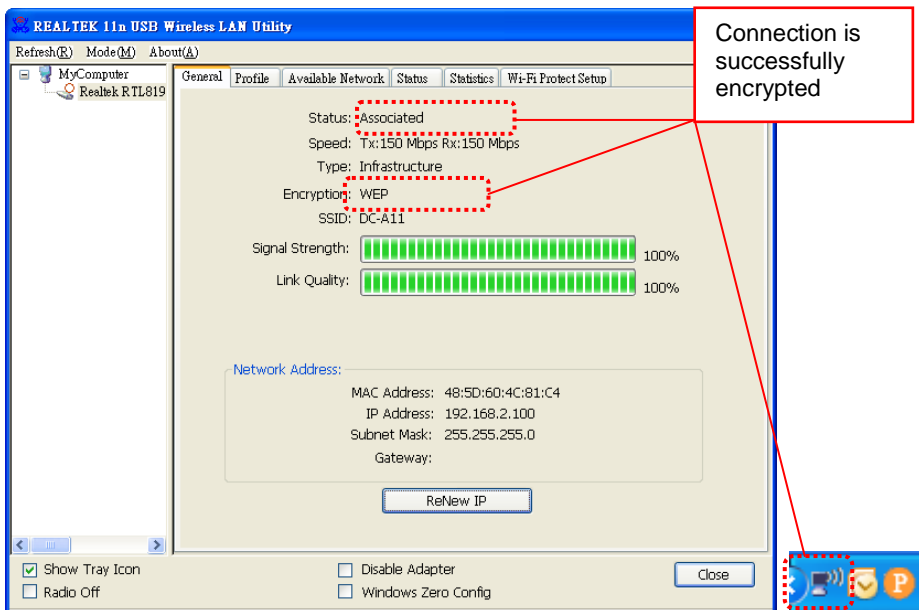
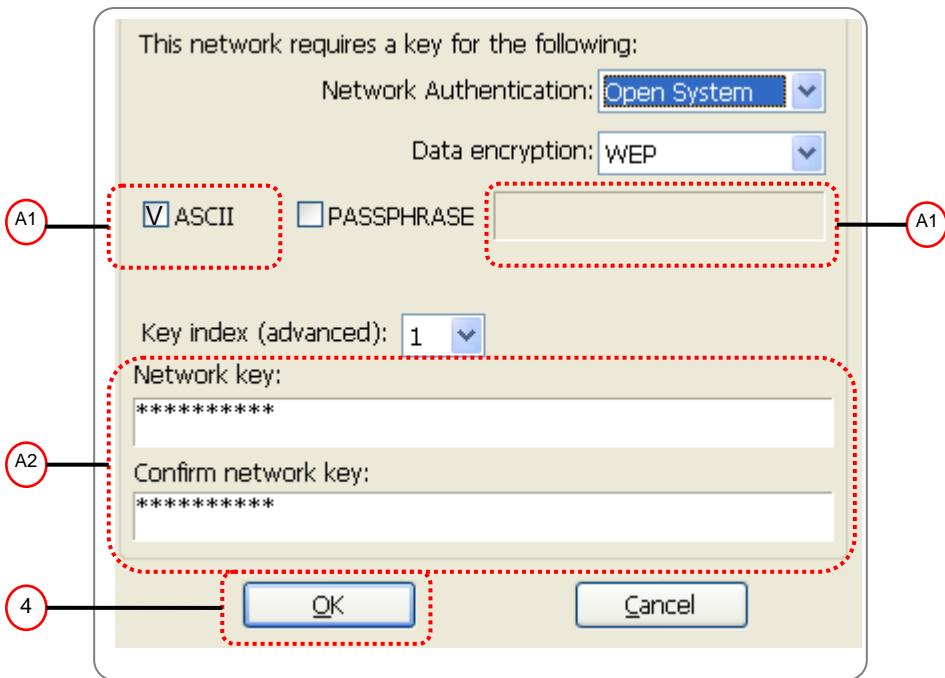


3. Settings:


A. Enter a Network Key

- A1. To use ASCII: Please check **[ASCII]** and enter a corresponding passphrase
- A2. To use HEX: Please enter a corresponding passphrase in the **[Network key]** and **[Confirm network key]** column

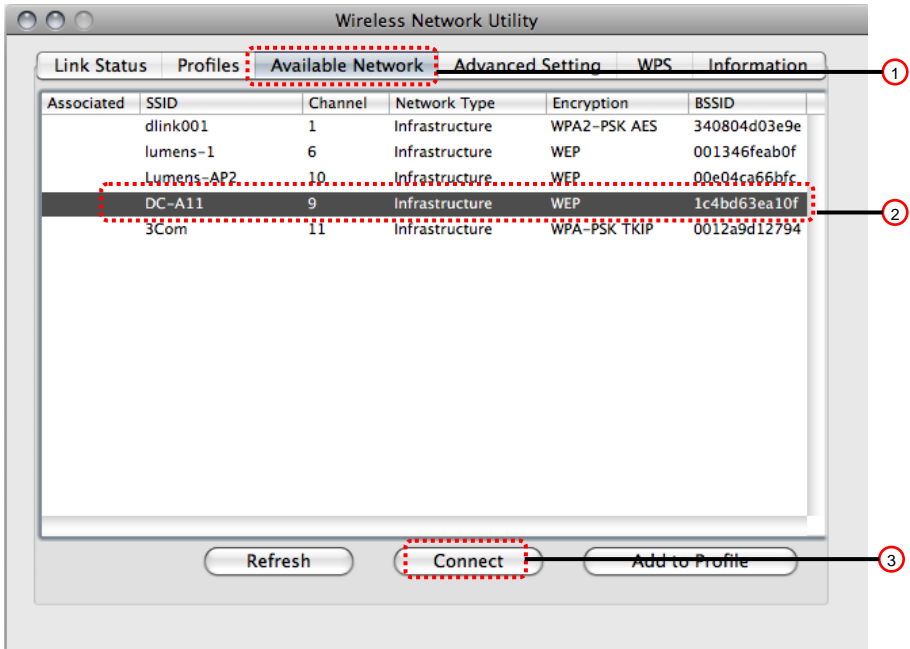
4. Press [OK] to apply your changes.



➤ For **MAC**

1. Double click the Wireless Network Utility  icon.

2. Select **[Available Network]** tab and click **[DC-A11]** (Default SSID name). Press Connect.



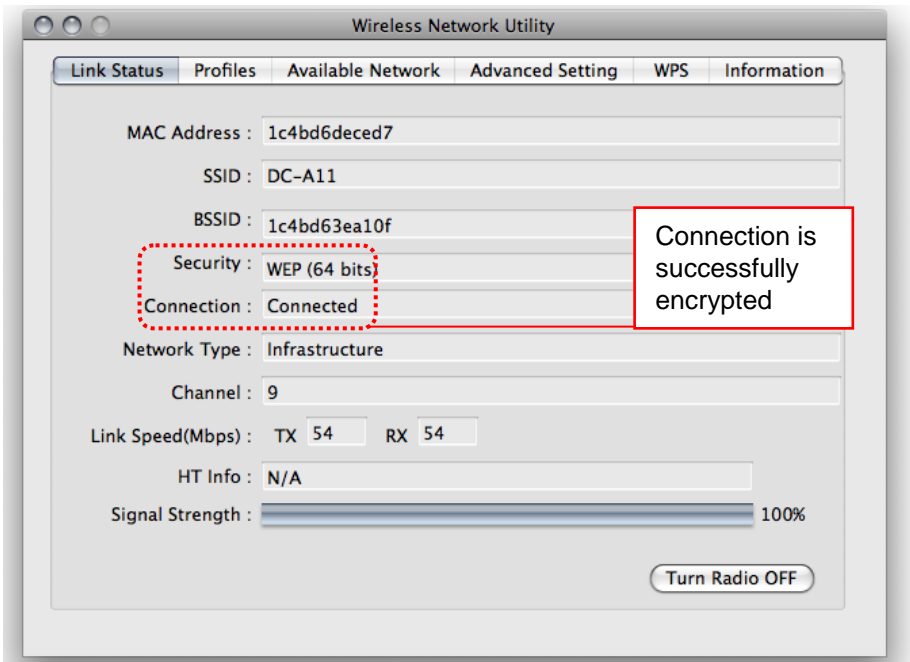
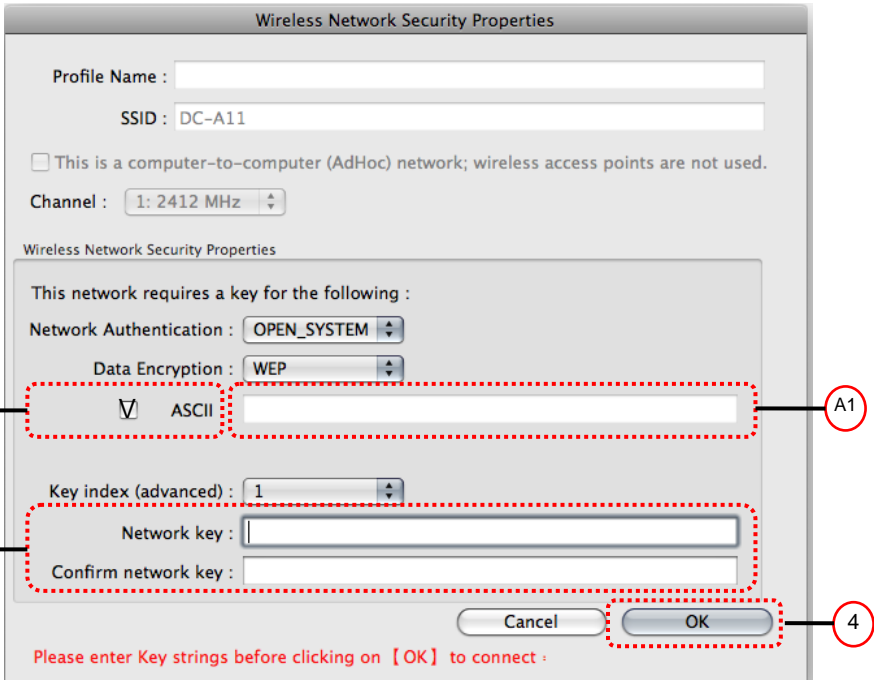
3. Settings:

A. Enter a network key

A1. To use ASCII: Please check **[ASCII]** and enter a corresponding passphrase.


A2. To use HEX: Please enter a corresponding passphrase in the **[Network key]** and **[Confirm network key]** .

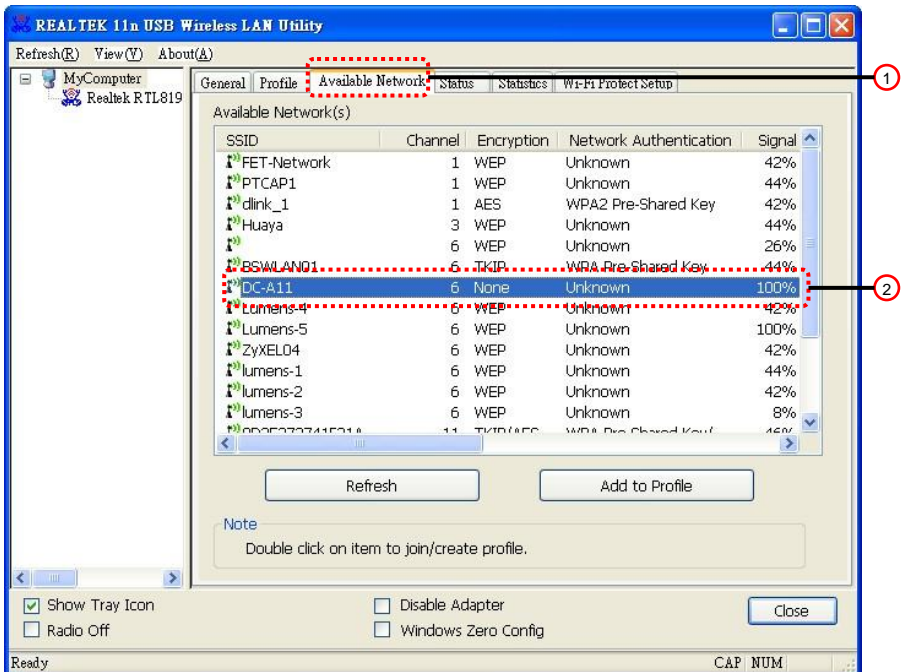
4. Press [OK] to apply your changes.



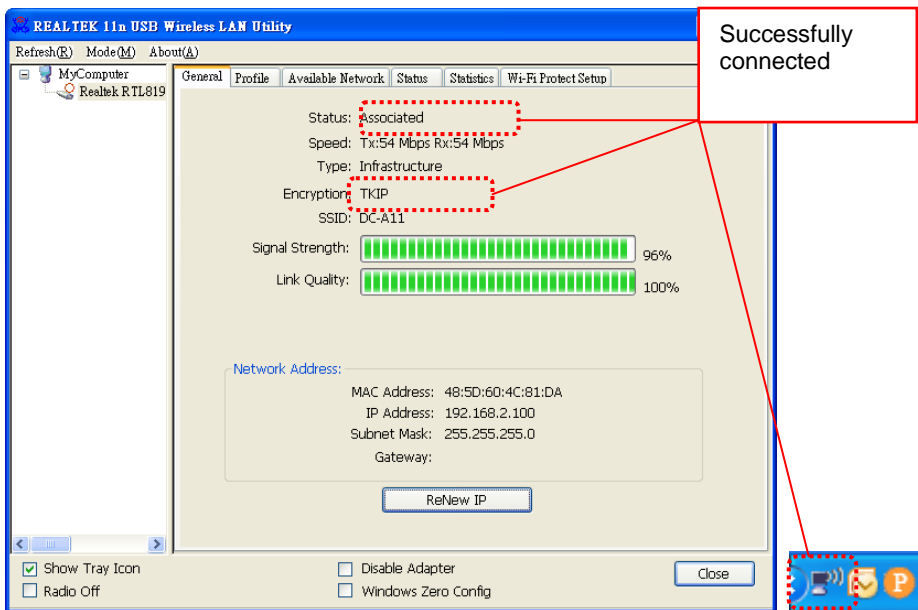
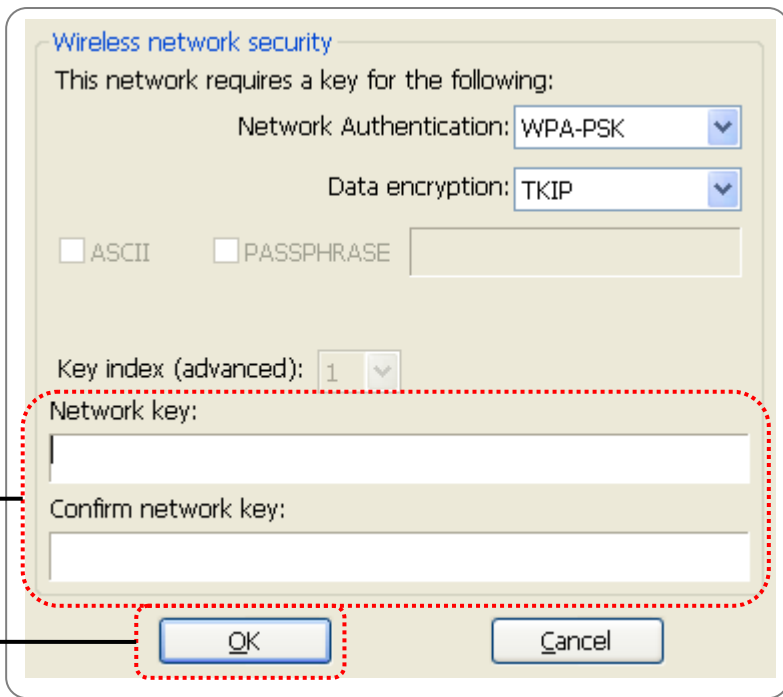
7.6.2.2 WPA-PSK, WPA2-PSK, WPA-PSK/WPA2-PSK Mixed encryption

➤ For **Windows**


1. Double click the Wireless LAN Utility  icon.
2. Select **[Available Network]** tab and click **[DC-A11]** (default).

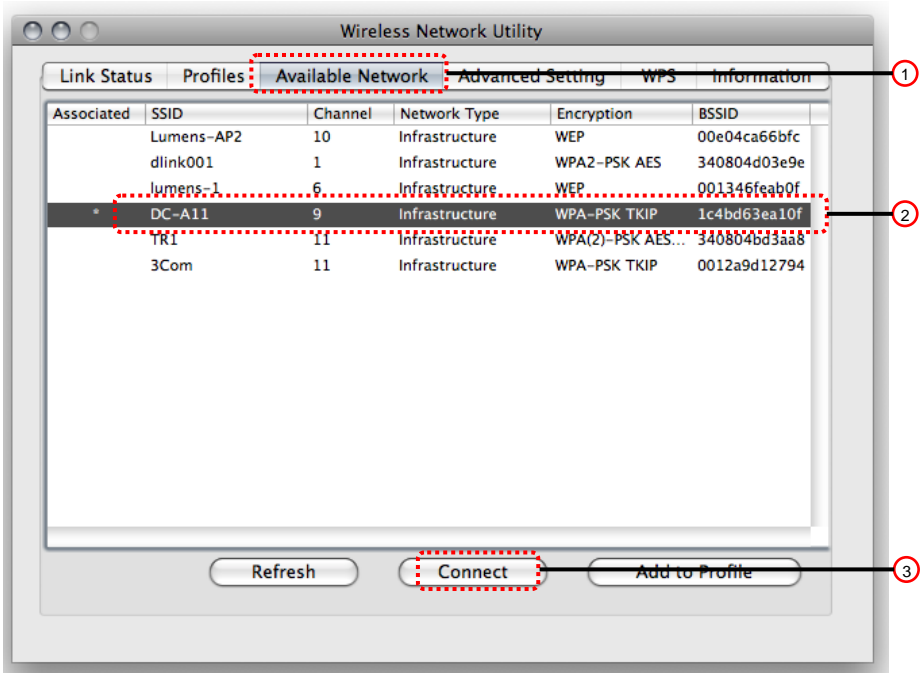


3. Please enter a corresponding passphrase in the **[Network key]** and **[Confirm network key]** column.
4. Press **[OK]** to apply your changes.

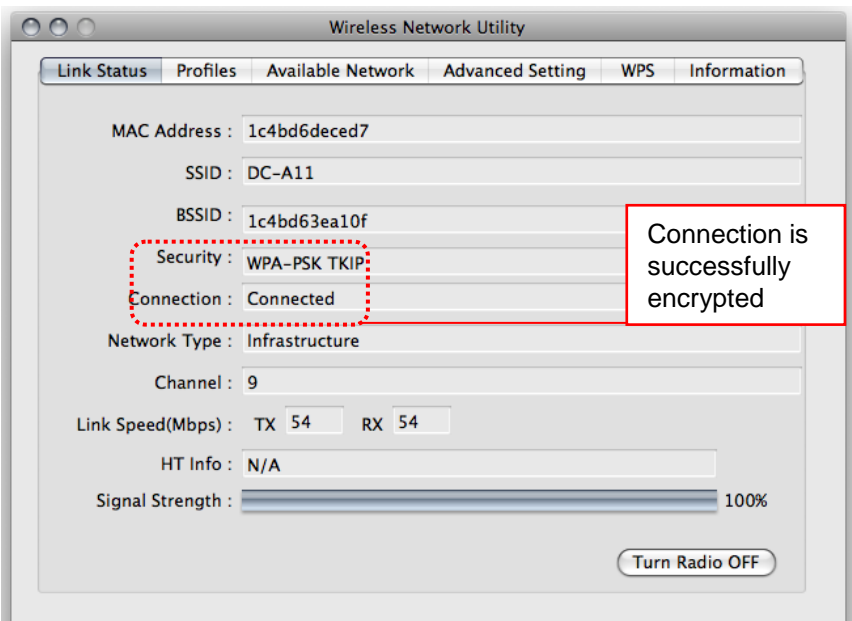
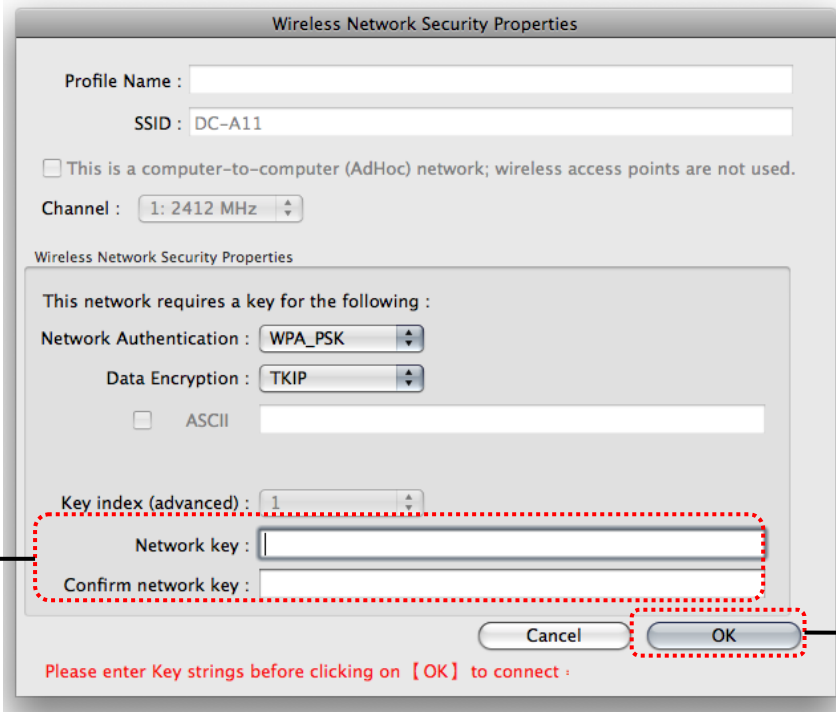


➤ For **MAC**

1. Double click the Wireless Network Utility  icon.
2. Select **[Available Network]** tab and click **[DC-A11]** (Default SSID name). Press Connect.



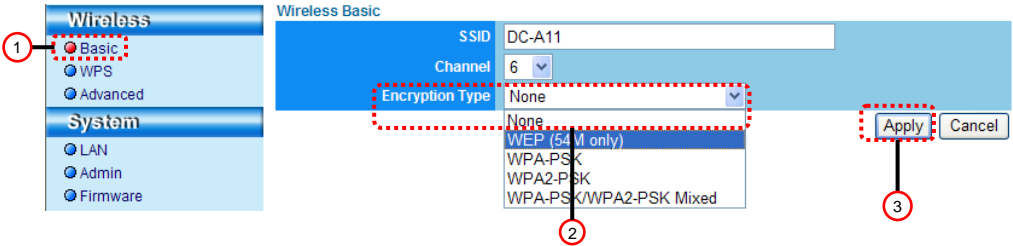
3. Please enter a corresponding passphrase in the **[Network key]** and **[Confirm network key]**.
4. Press **[OK]** to apply your changes.



7.7 I Want to cancel the encryption mode

7.7.1 Setup

1. Enter **[Basic]** page.
2. **[Encryption Type]**: Select **[None]**.
3. Press **[Apply]** to apply your changes.



7.7.2 Connecting (Without encryption)

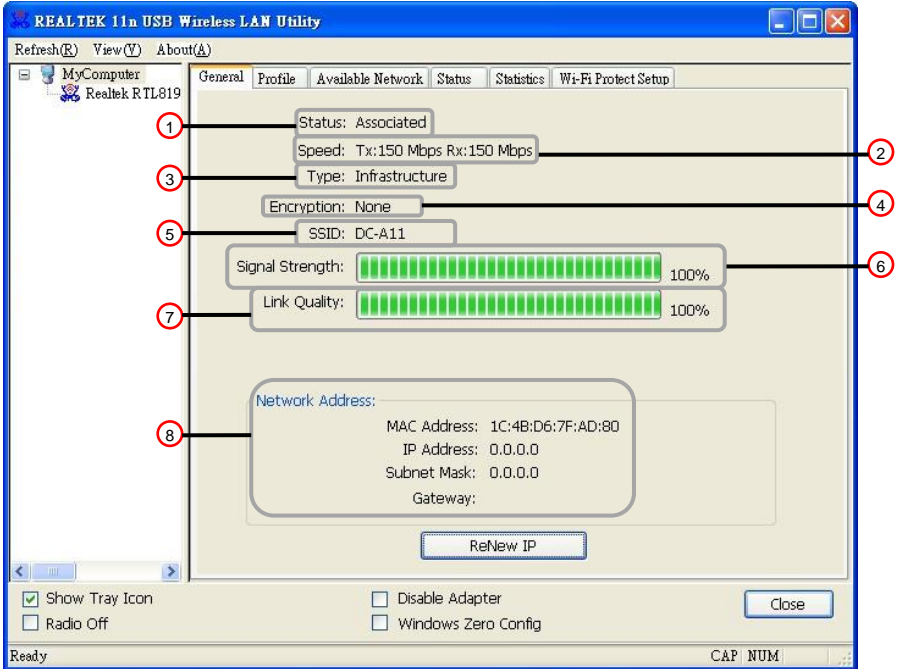
Please refer to Method 1 or Method 2 of [6.1 Start wireless connection](#) for reconnection.

Chapter 8 Administration Menu

8.1 Wireless LAN Utility

8.1.1 General

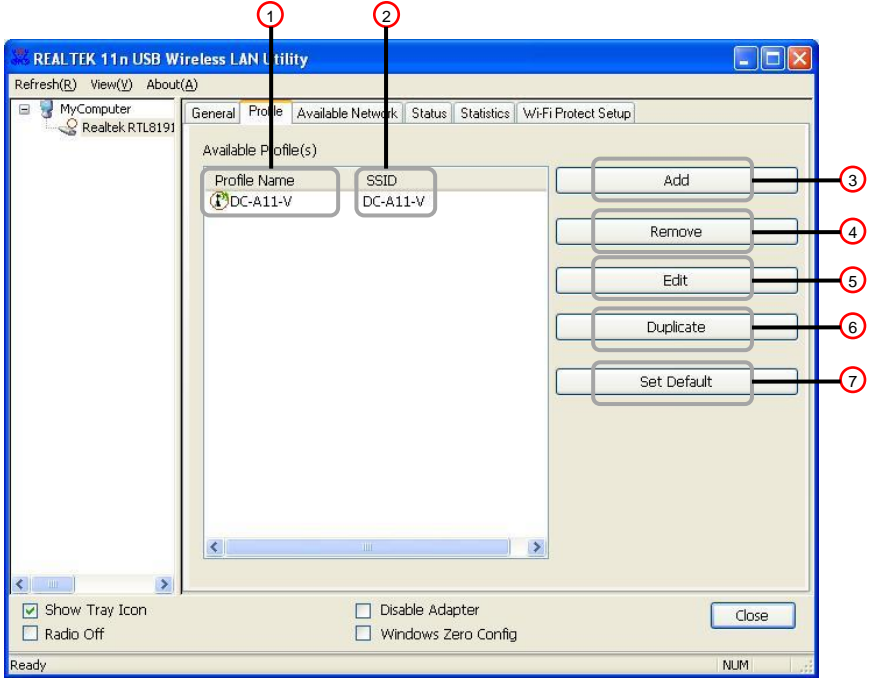
After starting the utility, the general page pops up. The **[General]** tab provides the information of your current wireless network connection. You may click the **[Renew IP]** button to refresh the information.




NO		Functions
1	Status	Check if the device is connected to target network.
2	Speed	The current connection speed.
3	Type	Connection type
4	Encryption	Encryption during connection
5	SSID	The SSID (network name) of the connected wireless network
6	Signal Strength	Wireless signal strength
7	Link Quality	Quality of wireless connection
8	Network Address	Shows the current MAC address, IP address, Netmask and Gateway.

8.1.2 Profile

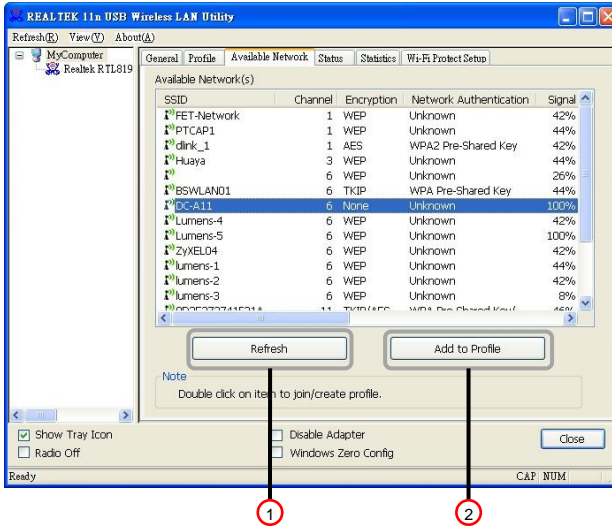
The **[Profile]** tab lists the preferred connections. You can click the buttons beside to configure each connection.



NO	Button	Functions
1	Profile Name	Name of the profile. In the list,  icon indicates the connected communication equipment.
2	SSID	The SSID of the profile
3	Add	To add a connection profile.
4	Remove	To remove a connection profile.
5	Edit	To modify a connection profile.
6	Duplicate	To make a copy of a connection profile.
7	Set Default	To select a connection profile as your default wireless connection.

8.1.3 Available Network

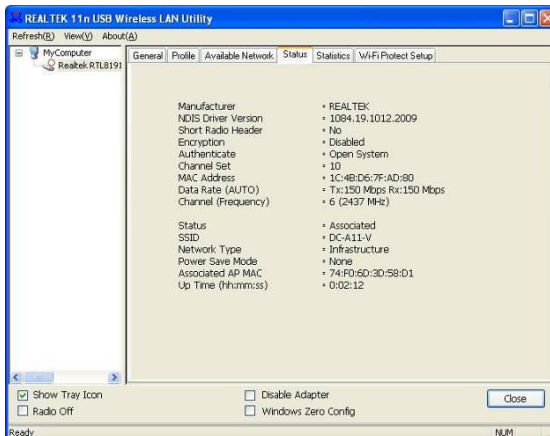
The [Available Network] tab lists the reachable wireless network.



		Functions
1	Refresh	To rescan available wireless networks.
2	Add to Profile	To connect and add an available connection profile.

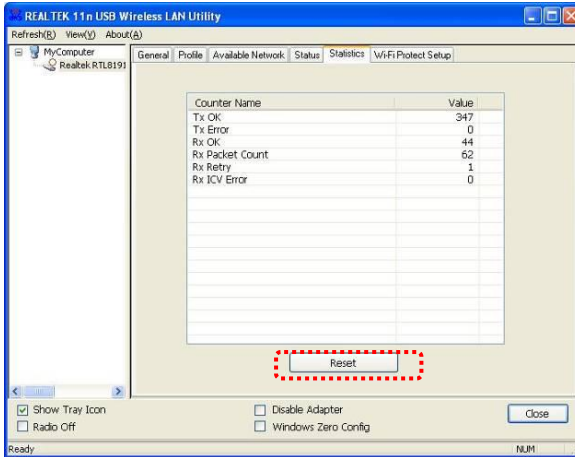
8.1.4 Status

The **Status** page shows current equipment status, including the name of manufacturer, firmware version and the current network settings.



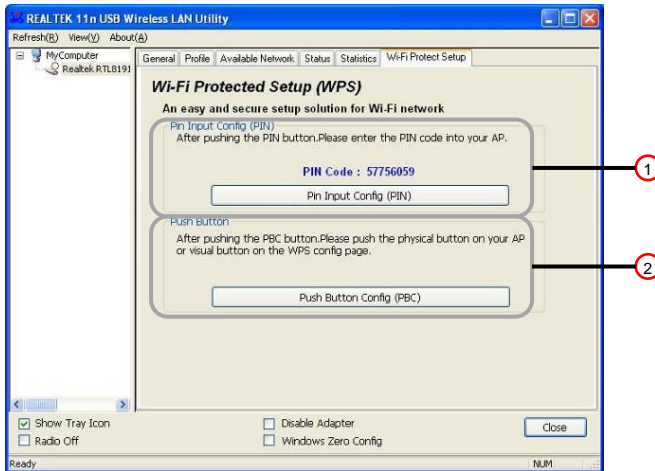
8.1.5 Statistics

The **Statistics** page shows the number of received and transmitted packets. Clicking the **[Reset]** button recounts the values from zero.



8.1.6 Wi-Fi Protected Setup (WPS)

An easy and secure setup solution for Wi-Fi network.



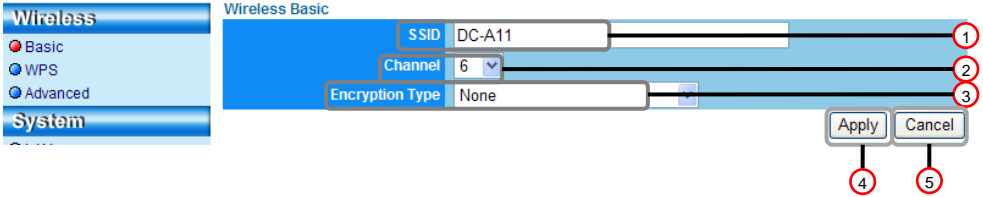
NO	Functions	
1	Pin Input Config	To select the PIN Code in your AP for WPS connection.
2	Push Button Config	Search the base station with WPS function for available network connection. [Note] Please also push the WPS button on DC-A11 for connection.

8.2 Webpage administration

8.2.1 Wireless

8.2.1.1 Basic

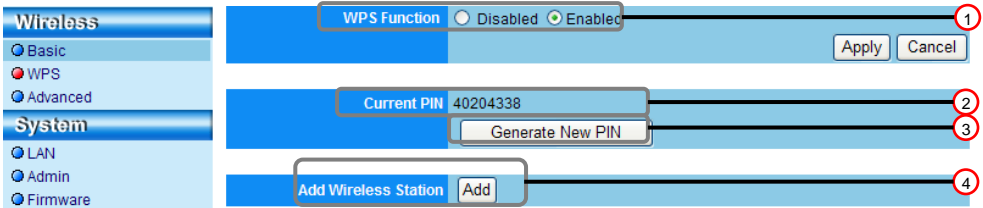
After you enter the webpage, the [Basic] page displays. You can check and modify the current setting of the DC-A11.



NO		Function Descriptions
1	SSID	SSID
2	Channel	To select any of channels 1 to 14.
3	Encryption Type	Encryption mode settings
4	Apply	Apply your settings.
5	Cancel	Cancel your changes.

8.2.1.2 WPS

You can enable/disable the WPS function on this page.



NO		Function Descriptions
1	WPS Function	Enable/disable the WPS function
2	Current PIN	The PIN code in use.
3	Generate New PIN	Regenerate PIN code
4	Add Wireless Station	To connect other wireless equipment.

8.2.1.3 Advanced

Advance

Wireless

- Basic
- WPS
- Advanced

Channel Width 20 MHz Dynamic (20/40 MHz)

ShortGI Disabled Enabled

Apply Cancel

NO		Function Descriptions
1	Channel Width	Band-width mode
2	ShortGI	Enable or disable the Short GI (Guard Interval)

8.2.2 System

8.2.2.1 LAN

Network setting page

Wireless

System

- LAN
- Admin
- Firmware

IP 192.168.2.1

Subnet Mask 255.255.255.0

DHCP Server Address Range 192.168.2.100 - 192.168.2.200

Apply Cancel

NO		Function Descriptions
1	IP	IP address setting
2	Subnet Mask	Netmask
3	DHCP Server Address Range	Available address range

8.2.2.2 Admin

Administration page for change of webpage password

NO		Function Descriptions
1	Login Name	Webpage administration account
2	New Password	New password
3	Retype Password	Re-type password for confirmation.

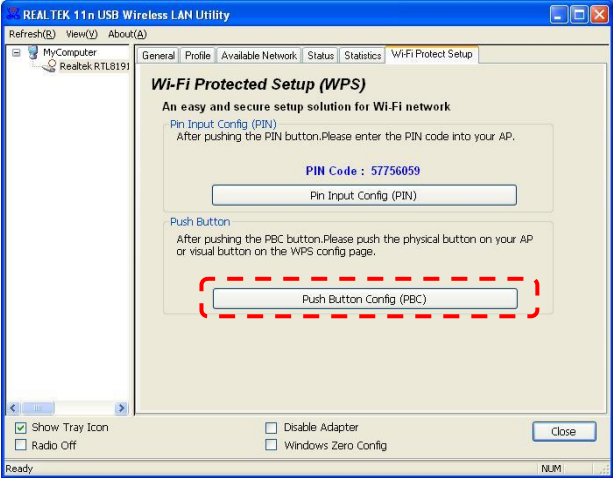
8.2.2.3 Firmware

You can update the software, return to the default value and restart the machine on this page.


NO		Function Descriptions
1	Firmware Version	To load the file and update firmware version.
2	Restore to Factory Default	Reset all configurations to factory default settings.
3	Reboot device	Restart

Chapter 9 Troubleshooting

This chapter describes problems you may encounter while using DC-A11. If you have questions, please refer to related chapters and follow all the suggested solutions. If the problem still occurred, please contact our distributors or service center.

No.	Problems	Solutions
1	LED indicator light OFF after DC-A11 is powered on	Please make sure DC-A11 has enough battery power (the battery indicator lights blue). If the battery indicator lights red, please connect the power cord to charge the device.
2	The WPS button on the wireless Dongle cannot be used	<p>If the WPS button on the wireless Dongle cannot be used, open the Wireless LAN Utility and go to the [Wi-Fi Protected Setup] page. Click [Push Button Config] to enable the WPS connection.</p> 
3	Automatic connection failed.	<ol style="list-style-type: none"> 1. Check the WPS settings. Please refer to 7.4 I would like to check the WPS connection setting 2. If the device still fails to connect to the network automatically, please follow manual connection steps by referring to 6.1.2 Manual Connection.
4	Auto connection is always timed out	It is recommended that you use the manual connection. Please refer to 6.1.2 Manual connection .
5	DC-A11 network connection failed.	1. Please make sure that there's no obstacle between the DC-A11 and the wireless Dongle that interferes with signals. Keep a proper

		<p>distance for wireless connection in place for better reception quality.</p> <ol style="list-style-type: none"> Please use the wireless Dongle in a ventilated place so as to prevent it from malfunctioning caused by overheating. Please make sure that DC-A11 connection setting is correct. Please refer to 6.1.2 Manual connection. The WPS connection of a second (or more) DC-A11 at the same time may cause disturbance and lead to connection failure. It is suggested that you make connections in sequence and only move to another one after a connection is successfully made. Use of two or more DC-A11 devices in the same place might interfere the wireless signals. It is advised to change the frequency channel of either one DC-A11 device to a different one in order to avoid signal interference. Please refer to 7.3 I would like to change the SSID and Channel. If WEP encryption is used, check whether settings or passwords are entered correctly.
6	DC-A11 network is connected but malfunctions.	<ol style="list-style-type: none"> Please confirm that the adapter is plugged into the USB port. Please restart network connection of DC-A11 and make sure that the USB connection between DC-A11 and DC120 is enabled. Then start the Ladibug™ or Podium View™ software.
7	Black screen occurs when you start Ladibug™ or Podium View™ and execute Preview	<p>The connection may be blocked by firewall due to the use of wireless network. Please refer to 6.2 Change the setting of firewall.</p>
8	The screen cannot be refreshed, and shows black screen	<ol style="list-style-type: none"> This issue occurs when you unplug the Dongle directly while using the Ladibug™ or Podium View™. Please close the Ladibug™ or Podium View™, and then unplug the Dongle.
9	The computer crashes after you	<ol style="list-style-type: none"> Please close the Ladibug™ or Podium View™, and then modify the settings.

	have modified any settings	
10	The webpage cannot be displayed when the setting is updated.	<p>Method 1: Please log in the webpage again.</p> <p>Method 2: Please follow the steps of 6.1.1 Auto connection for reconnection.</p> <p>Method 3: Please press and hold the DC-A11 [Reset] button for 5 seconds. After restarting, please follow the steps of 6.1 Start wireless connection for reconnection.</p> <p>If the problem still occurs, please contact your distributor.</p>
11	The message “Profile exist. Do you want to overwrite is?” pops up during reconnection.	<p>Because your connection profile is named by [SSID], this message will pop up when you reconnect with WPS connection or manual connection and different settings are used. Click [Yes] for confirmation.</p> 
12	The corresponding DC-A11 cannot be identified when two DC-A11 or more are connected.	Please follow the steps of 6.1.3 Change the SSID to modify the SSID.
13	Do I have to reset the configurations when changing the DC-A11 or Dongle?	<ol style="list-style-type: none"> 1. You should reset the configurations when the DC-A11 is changed. 2. You do not have to reset the configurations when the Dongle is changed.
14	Password missing. Failure to login the admin page.	Please hold the [Reset] button on DC-A11 for 5 seconds to reset all configurations to factory default setting.
15	How to deal with a weaker signal?	<ol style="list-style-type: none"> 1. Please relocate the DC-A11 to get a better connection. 2. Please set a different channel frequency of DC-A11 in the admin page to avoid signal interference. Please refer to 7.3 I would like to change the SSID and channel.
16	Fail to connect to	Please use built-in wireless connection in Win7

	DC-A11 with the "Wireless LAN Utility" in Win7 operating system.	according to the steps below: <ol style="list-style-type: none"><li data-bbox="426 118 1009 177">1. Click Start to open the Start menu, and click Control Panel -> Network and Internet.<li data-bbox="426 188 1028 309">2. Select Connect to a network option in the "Network and Sharing Center" window, and access points found in your wireless environment will appear for your selection.<li data-bbox="426 320 1020 442">3. Select DC-A11 from the Dongle wireless network connection (Realtek RTL8191SU Wireless LAN 802.11n USB 2.0 Network Adapter) and click Connect.<li data-bbox="426 453 990 512">4. If encryption function is enabled, enter key password and click OK.<li data-bbox="426 523 990 612">5. Return to the Network and Sharing Center window and the wireless network you have connected to displays.
--	---	--